



# AUSTRALIA'S LARGEST SIMMENTAL BULL SALE

10AM - MONDAY 31<sup>ST</sup> JULY 2023, CQLX GRACEMERE

STUDS FROM EVERY MAINLAND STATE IN AUSTRALIA  
WITH OVER 250 YEARS OF COMBINED BREEDING

125  
LOTS

12  
VENDORS





# RayWhite®

## RURAL & LIVESTOCK

### RAY WHITE RURAL & LIVESTOCK BLACKALL



**ANDREW TURNER**  
0427 584 166



**JOE GROVE**  
0428 958 639

LICENSED AUCTIONEERS  
SELLING WEEKLY AT BLACKALL SALEYARDS  
AUCTIONS PLUS & PRIVATE Paddock SALES  
LIVESTOCK FINANCE  
FEEDLOT SERVICES  
RURAL PROPERTY SPECIALIST



**LIAM KIRKWOOD**  
0457 577 747

### RAY WHITE RURAL & LIVESTOCK TOWNSVILLE

AWARD WINNING LICENSED AUCTIONEER  
SELLING WEEKLY AT CHARTERS TOWERS SALEYARDS  
AUCTIONS PLUS & PRIVATE Paddock SALES  
RURAL PROPERTY SPECIALIST

### RAY WHITE RURAL & LIVESTOCK CORPORATE

NATIONAL LIVESTOCK MANAGER  
PATON FITZSIMONS  
0427 574 355



### RAY WHITE RURAL & LIVESTOCK GRACEMERE



**COLIN GOODWIN**  
0429 829 143



**GARY WENDT - 0427 184 875**



**MATTHEW OLSSON**  
0428 829 263

LICENSED AUCTIONEERS  
SELLING WEEKLY AT GRACEMERE SALEYARDS  
AUCTIONS PLUS, PRIVATE Paddock SALES & STUD STOCK SALES  
RURAL PROPERTY SPECIALIST  
PROPERTY CLEARING SALES

SELLING AGENTS FOR THE  
QUEENSLAND SIMMENTAL BULL SALE

RayWhite®



## **PURCHASE ALL YOUR SIMMENTAL BULLS AT ONE TIME TO SAVE ON TIME AND TRAVEL COSTS**

### **TIGHTEST ENTRY CONDITIONS FOR ANY SIMMENTAL BULL SALE IN QUEENSLAND AND POSSIBLY AUSTRALIA:**

- All bulls entered are 8/8 registered purebred with the Simmental Association of Australia or American Simmental Association to guarantee buyers of hybrid vigour which is critical for an F1 cross.
- All bulls DNA verified to sire and tested Pesti-Virus Free
- All bulls Vet Checked, Morphology Tested, Mouthed and Scanned
- No hoof trimming on all Bulls
- Minimum vaccinations. 3 Germ Blooded (Tick Fever), 7-1, 3-day, Pestivirus, Vibrio and Botulism
- All studs minimum JBAS 6
- Strict minimum and maximum weight limits apply to prevent the sale becoming a feeding contest
- Most interstate bulls acclimatised in Queensland prior to the sale
- Bulls previously advertised for sale are ineligible for inclusion in the sale

**FIND OUT MORE AT**  
**[www.qldsimmentalbullsale.com.au](http://www.qldsimmentalbullsale.com.au)**



# SIMMENTAL BULLS FOR SALE FROM QUEENSLAND & AROUND AUSTRALIA

The sale includes bulls born and raised right here in Queensland but also includes animals from high performing studs from other states. Knowing that commercial beef producers often travel Australia Wide to source new and different Simmental genetics (outside of those readily available in Queensland) the Queensland Simmental Bull Sale has brought those bulls right here to save time and travel costs.

## VISION FOR THE SALE

*The preferred place to buy and sell Simmental Bulls in Australia*

In 2017 a number of Simmental Breeders saw the need for one Simmental Bull sale based close to the Fitzroy Basin in Queensland. The sale provides buyers the opportunity to purchase all of their Simmental Bulls at one time saving on both travel costs and time whilst also providing access to new and varied genetics.

Foundation vendors also identified that sale conditions needed to be extremely tight to ensure that only the highest quality of bulls are offered and that ongoing participation in the sale needed to be based on performance (selling average and clearance rates).

Initially most Simmental Studs in Queensland were invited to participate in the sale to sell bulls, promote their existing sales and promote the Simmental Breed in general. Ultimately for a variety of reasons the majority of these studs chose not to participate. In hindsight this proved of benefit to the sale as it allowed Australia Wide participation thereby increasing diversity of genetics offered to the astute bull buyer.

## SALE LOCATION - CQLX

CENTRAL QUEENSLAND LIVESTOCK EXCHANGE, GRACEMERE

*One modern facility combined with some of Australia's oldest Simmental Studs*

The Queensland Simmental Bull Sale selected the Central Queensland Livestock Exchange (formerly known as the Gracemere Saleyards) as the preferred selling complex for the sale given its closeness to the Fitzroy Basin and it's modern facilities. The complex commenced operations in January 1953 and is situated 8 kms west of Rockhampton on the Capricorn Highway leading to the Central Highlands and the Central Western centres of Barcaldine, Blackall, Longreach and Winton. The facility has the capacity to sell over 5000 head of cattle each week at its Wednesday Prime/Store Sale and includes a café, function room, feedlot and dedicated spelling yards.

## BULL WALK



Once again in 2023 a "Bull Walk" will occur on Sunday 30th July. This is a great opportunity on the day prior to sale to have a really good look at all lots in large pens enabling the prospective buyer to:

- A.** Make a well informed assessment of structural correctness;
- B.** Have a close look at feet and step;
- C.** Observe the temperament of bulls; and
- D.** Talk to vendors about their stud breeding programs.

**All bulls are available for viewing from Sunday 30<sup>th</sup> July at the selling complex.**

**Independent or personal viewing of all lots is also available at request.**

# MATERNAL VALUE

... It shouldn't be complicated



**Simmental**  
AUSTRALIA



*The next level in performance*

- HIGH FERTILITY
- LONGEVITY
- INCREASED MATERNAL WEANING WEIGHTS
- BETTER MILKING ABILITY
- DOCILITY
- EXCEPTIONAL MATERNAL CALVING EASE

# BEN SIMPSON, THISTLEBANK GRAZING, FINDS SUCCESS WITH SIMMENTAL BULLS FROM THE QUEENSLAND SIMMENTAL BULL SALE IN HIS COMMERCIAL BEEF OPERATION AT ARAMAC.

**Fifth generation beef producer Ben Simpson knows all too well the influence the Simmental breed can have on a commercial operation.**

Ben and wife Kim run a Simmental-cross commercial herd on Thistlebank, a 22,000-hectare property, 100km north of Aramac, in central west Queensland.

Since taking over management of the family-owned property in 2018, Ben has been transitioning from a Braford-Charolais herd to Simmental, impressed with the breed's ability to gain weight and temperament in the bulls.

"Our cow herd is still a Braford-Charolais-Simmental cross but we are trending to straight Simmentals," Ben said. "We cross Angus over our maiden heifers but from the second calf onwards we intend to cross with Simmental bulls."

## MARKET SUITABILITY

Ben said the Simmental breed was tough enough to sustain the tough central west Queensland environment but soft enough to meet the Woolworth's feeder market.

"Markets are changing and times are changing," Ben said. "You have to change with what the consumer wants. We seem to be able to achieve a premium for the softer, flatback Woolworths feeder spec animal which is what we are transitioning to. Every time we line up a good run of weaners we go close to topping the market, not every time but 90 per cent of the time."

A run of good seasons and plenty of grass prompted Ben to shift his focus from a predominant breeding operation to the feeder market, with the change certainly paying dividends to the bottom line.

## RESULTS

"The Simmental-cross seems to fatten well over the summer period," Ben said. "Depending on the rain, the cattle were gaining between 0.8 to 1.3 kg a day over that summer period. I sold some steers mid last year and they sold very well, making \$7 a kilogram which was pretty well the best in the market at the time."

While sales returns are what matters, the performance of Ben's Simmental-cross steers in the Westech Field Days at Barcaldine set the benchmark for the value of the Simmental in a cross-breeding operation.

The trial is held every three years, and animals are judged across three sections, being grassfed, feedlot and carcass.

Ben has entered the steer trial three times (the 2023 event is currently underway) and Thistlebank Grazing is certainly making its mark.

In 2021, Thistlebank steers were named the overall champion, winning the grassfed and carcass sections, and finishing second in the feedlot component.

They also won best individual animal and best runner-up animal.

"It obviously indicates we are on the right path," said Ben, who has another 10 head in this year's trial. Ben is currently adopting a new rotational grazing method on Thistlebank, aimed at "growing more grass, running more cattle and improving weight gains".

## WHY THE QUEENSLAND SIMMENTAL BULL SALE?

When searching for new Simmental bulls for his operation, Ben is a regular buyer at the annual Queensland Simmental Bull Sale, where he looks for early maturing, soft easy doing bulls with good structure and a slicker coat.

He's never left the sale empty handed, generally taking away four or five new bulls.

*"I have found the Queensland Simmental Bull Sale to be the best sale for the wide choice and variety of Simmental bulls on offer,"* Ben said. "There is a high standard of bulls to suit just about every budget."



# SIMMENTAL DOES THE JOB



## Comet beef producer Dean Armstrong is a big fan of the Simmental breed.

He uses Simmental bulls on his 45,505 hectare property on the banks of the Comet River in Queensland's central highlands region, where he crosses them over Charolais and Santa Gertrudis cows.

"The Simmental does a great job for us," Dean said. "They give us good females to breed with, and the temperament in the bulls is great. We produce a cross-bred article because I think hybrid vigour is the easiest

way to make money out of grass. I'm a firm believer that anything that has the right constitution, regardless of the breed, is the right one to use, and the Simmental has been consistent. We are well and truly hitting the mark with respect to weight gains."

Dean targets the Jap Ox market, turning off up to 4500 steers around 650kg live weight, a year.

He runs a breeding and fattening operation with a breeder herd of 3000 head, and also buys in cattle when needed.

The operation has benefited greatly from some solid seasons, with a good feed bank helping maximise the Simmental's ability to gain weight.

Dean has been using Simmentals for the past six years, and has been a regular buyer at the annual Queensland Simmental Bull Sale where he looks for muscle, confirmation and good heads in the bulls he purchases.

*"We are pretty well assured of getting good quality bulls and a number of them every year at the Queensland Simmental Bull Sale,"* Dean said. "The variety is great and there is plenty to choose from."

## INSURE YOUR BULLS

through Nutrien Insurance, QLD Simmental Bull Sale's preferred insurance broker.

See our representatives on the day to get cover from the fall of the hammer.

<b>Contact:</b>	<b>Kiah Charles</b> 0409 380 504	<b>Brett Kirkbride</b> 0429 033 988	<b>Carol O'Connor</b> 0428 721 737	<b>Jaime Burns</b> 0407 016 074
-----------------	-------------------------------------	--	---------------------------------------	------------------------------------

Nutrien Ag Solutions can also arrange Farm Insurance, with discounts given to all Agforce members.

Nutrien Ag Solutions ensures your risk protection needs are covered.

Options include but not limited to:



Farm



Motor



Household



Landlord



Commercial



Aviation



Marine



Strata



Cyber



Fleet

Nutrien Ag Solutions Limited is an authorised representative of Marsh Advantage Insurance Pty Ltd and is authorised to deal in, and provide financial product advice in connection with, general insurance products.



Nutrien Ag Solutions is an authorised representative of  
**MARSH ADVANTAGE  
INSURANCE**

**Nutrien**  
Ag Solutions®

# 2022 QUEENSLAND SIMMENTAL BULL SALE REPRESENTED GREAT VALUE

The Queensland Simmental Bull Sale at CQLX Gracemere in 2022 represented great value for buyers with no pumped up prices and quality bulls available for every budget.

A 99% clearance rate was achieved with 99 lots averaging \$12,700 providing access to quality Simmental Bulls sourced from every mainland state - Australia wide. With no lots run up and all bulls meeting the extremely tight entry conditions results were as follows:

\$5000 → \$10,000	\$10,001 → \$15,000	\$15,001 → \$20,000	\$20,001 → above
49 lots	29 lots	15 lots	10 lots

## Outlook for the 2023 Sale - 31 July 2023, CQLX (Gracemere)

- A. Selling agents Ray White Rural advise this is the best draft of bulls entered in the sale yet.
- B. Dry weather means more bulls will make it to sale, preparation won't be interrupted, and step will be normal.

## What makes the Queensland Simmental Bull Sale different?

1. Extremely tight entry conditions to guarantee quality of product.
2. Diverse genetics. Where else in Australia (if not worldwide) can over 100 carefully selected Simmental bulls from 2000 registered females and approximately 300 recips be accessed at one time.
3. Size. The largest Simmental Bull Sale in Australia for the genuine article i.e. all bulls purebred Simmental/Fleckvieh with all lots registered and DNA verified to guarantee hybrid-vigour.
4. A number of vendors have reciprocal or other arrangements in place with Simmental operations elsewhere on the globe including the United States, Canada and New Zealand.
5. Vendors include studs with large scale commercial operations, cropping operations, sheep and other agricultural operations along with others vendors diversified in non-farming operations who know the commercial value of livestock and land.

CATALOGUES.  
MARQUEES.  
FLAGS. BANNERS.  
& MUCH MORE.

# PRINT ANYTHING

PRINTING. DESIGN. SIGNAGE. EMBROIDERY.

1800 804 643. [WWW.PRINTANYTHING.COM.AU](http://WWW.PRINTANYTHING.COM.AU). INVERELL. MOREE. NARRABRI. NSW.

Instagram and Facebook icons are present in the top right corner.





# CHANGES FOR 2023

## CHANGES AND UPDATES TO THIS YEARS SALE

1. A number of buyers requested Breedplan Data (EBIVs) for the 2023 sale and this was initially planned by sale vendors. Following this in early 2023 Simmental Australia introduced EPDs to performance measure the breed. With some vendors using EBIVS and other using EPDs the decision was made to leave performance data out of the catalogue but vendors are encouraged to present performance data on sale day.
2. In 2022 a small number of vendors entered bulls in the show circuit. For 2023 the sale determined it doesn't wish to discourage individual vendors entering bulls in shows but also that sale conditions cannot make exceptions to the "no coat clipping" rule. On this basis the "no coat clipping requirement" has been removed however all vendors have been reminded that "clipping the ears, tail set and pizzle is the preferred presentation of bulls".
3. A number of independent selling agents requested "more bulls" and more "black bulls" for 2023. In considering this request Joe Grove, Ray White Blackall and Gary Wendt, Ray White Gracemere visited vendors studs all across Australia and are highly impressed with the overall quality of the line up of bulls for this years sale.
4. Way back in 2020 the Queensland Simmental Bull Sale initiated a survey of 400 Queensland Commercial Beef Producers to develop a desired "specification for a European bull suitable for Queensland Markets and the Queensland Climate". On that basis a number of interstate studs subtly changed their genetic programs and this year the sale will see a result of those changes for the first time.

Once again bulls will be available for viewing at the Bull Walk Sunday 30th July, CQLX Gracemere.

# BEDDOWS TRANSPORT



**SERVICING ALL YOUR CATTLE AND HAY  
TRANSPORT NEEDS WITH A SINGLE DECK  
40FT TRAILER. COMPETITIVE RATES &  
RELIABLE TRUCK.**

Experience the reliable transportation services of Beddows Transport as we proudly offer our services for the transportation of bulls from the Queensland Simmental Bull Sale on July 31st, 2023.

With routes covering North and West of CQLX, as well as a dedicated run south of CQLX, we ensure that your valuable assets are taken care of with the utmost priority for their well-being.

*Trust Beddows Transport for a seamless and professional bull transportation experience.*



## LOW-STRESS *Pregnancy Scanning*

*Our services also include low-stress pregnancy scanning for your herd. We have the expertise to determine the stage of pregnancy accurately and as early from day 30 of gestation. We provide quick scanning capabilities, allowing us to scan up to 4 cows per minute. By offering this efficient service, we can catch issues that may result in abortion thus reducing the occurrence.*

*Additionally, our rates become more affordable as the number of cattle to scan increases. Our coverage extends throughout the entirety of Queensland, and we bring years of experience to ensure high-quality service.*

**CONTACT STEPHEN 0499 199 220**

# SALE TERMS & CONDITIONS

- **Online bidding and viewing of lots will be available via Stock Live: [www.stocklive.com.au](http://www.stocklive.com.au)**
- The Auction will be conducted under the Australian Livestock & Property Agents Association (ALPA) Livestock Auction Terms and Conditions Of Sale. These terms and conditions are displayed in the main front office of the CQLX selling complex. Compliance with sale terms and conditions is the responsibility of individual vendors.



**To view these Terms and Conditions go to:** <http://www.alpa.net.au/UserFiles/File/Documents/ALPA%20Livestock%20Terms%20and%20Conditions%20FEB%202017.pdf>

← **or scan this QR Code**

- Insurance Representatives will be in attendance on sale day and we recommend that buyers intending to insure their purchases do so from the fall of the hammer.

Nutrien Insurance is the preferred insurer for the sale and will be on site to arrange insurance for Bulls.

- **GUARANTEE:** All bulls come with a six month structure and fertility guarantee. In the case (supported by a Veterinarian Report) that a bull is found to be incapable of natural service or infertile, the selling stud vendor will replace the bull or provide a credit (less disposal proceeds) to the buyer for future purchases from the stud vendor. This condition is provided on the basis that the problem was not caused by injury or disease incurred post fall of the hammer at auction. The sale as a separate entity assumes no responsibility for individual bulls or vendors.

- **CATALOGUE DISCLAIMER:** All reasonable care has been taken by the vendors to ensure the information provided in the catalogue is correct. However the vendor and selling agents do not give any warranty as to errors or omissions. Prospective purchasers should satisfy themselves by inspection or otherwise as to the accuracy of the information provided.

## FREIGHT

There are numerous freight options available at the selling complex on sale day including a number of vendors delivering bulls themselves. In 2021 sales bulls travelled to all parts of Queensland with some also heading south.

Gary Wendt (Ray White Rural - Gracemere) will be co-ordinating freight on behalf of the sale and Gary can be contacted on 0427 184 875 or in the Ray White Office at CQLX on sale day.

## BULL PREPARATION & ACCLIMATISATION

A large number of the bulls presented in the sale are from vendors based in Queensland and this can be referenced in the participating studs section. These studs include multiple Queensland vendors (some located in heavy tick country) and a number of interstate vendors who have completed the last stages of bull preparation in Queensland.

Strict instructions on feeding programs and desired weight have been provided to all vendors to ensure bulls are not over prepared and are ready to work. Given the timing of the sale many bulls will be spelled prior to a controlled joining later in the season whilst others simply go straight to work. The timing and conditions of the sale have been selected to suit Queensland Commercial Cattle producers many of which have been buying Simmental Bulls from southern states for years.

## VENDOR PROFILE: Springside Simmentals



**Peter and Toni**  
**0427 800 522**  
**springside@skymesh.com.au**  
**357 Irongate Rd**  
**Springside QLD 4356**

Since the birth of our first Simmental calf in 1975 we have seen the Simmental breed slowly gain popularity within Australia and Springside has continually evolved and adapted over this long period. The Simmental has proven itself again and again and has shown that both bulls and females can produce quality, weighty offspring that ultimately result in better returns for the commercial breeder.

Springside Simmentals is owned by Peter and Toni Rauchle at "Springside" near Pittsworth QLD. Springside currently run around 150 breeders from which they have sold bulls and females throughout the Eastern States of Australia for many years

Today's Springside Simmentals and their crosses produce earlier finishing calves, have great weight-for-age, muscling and carcass yield attributes and have all the benefits synonymous with the Simmental Breed.

Springside is one of Queensland and Australia's oldest Simmental Stud Breeding Operations.

### LOT 1 SPRINGSIDE SORBA (P)

VENDOR: Springside



**ID:**  
PTRPS002

**DOB:**  
20/07/2021

**S:** CROSSROAD VINTAGE 125Z

**SIRE:** CROSSROAD POLLED FUTURE

**D:** CROSSROAD ZELESTE 19Z

**S:** BAR 5 GLOBETROTTER ZURITA

**DAM:** SPRINGSIDE KORIA 18

**D:** SPRINGSIDE KORIA

#### COMMENTS

A dark red, powerful, thick young polled bull full of performance, muscle, style and a great back line. Sorba has been a favourite from birth with his stance, movement and temperament that cannot be faulted.

BUYER: ..... PRICE \$ .....

### LOT 2 SPRINGSIDE STERLING (PP)

VENDOR: Springside



**ID:**  
PTRPS321

**DOB:**  
15/07/2021

**S:** BARANA YEARDLEIGH

**SIRE:** WOONALLEE DIMENSION

**D:** WOONALLEE TARA

**S:** JNR GRAVITY

**DAM:** SPRINGSIDE ERIKA 18

**D:** SPRINGSIDE ERIKA

#### COMMENTS

Sterling is a head turner. A real powerhouse of muscle, effortless movement, well balanced and wide backline. Homozygous polled and dark red. The complete package.

BUYER: ..... PRICE \$ .....

**LOT 3 SPRINGSIDE SOMERS S812 (P)****VENDOR: Springside**

**ID:**  
PTRPS812

**DOB:**  
29/08/2021

**S:** BLUE DOG KALGOORLIE

**SIRE: SPRINGSIDE PACMAN**

**D:** SPRINGSIDE GAVRYL

**S:** WOONALLEE DIMENSION

**DAM: SPRINGSIDE LORNA 18**

**D:** SPRINGSIDE LORNA L404

**COMMENTS**

A soft, upstanding young bull with length and style in abundance. Quiet temperament with an excellent family line which produces both exceptional bulls and replacement heifers.

BUYER: ..... PRICE \$ .....

**LOT 4 SPRINGSIDE SUNNY (PP)****VENDOR: Springside**

**ID:**  
PTRPS312

**DOB:**  
16/09/2021

**S:** BLUE DOG KALGOORLIE

**SIRE: SPRINGSIDE PACMAN**

**D:** SPRINGSIDE GAVRYL

**S:** SPRINGSIDE KENNY

**DAM: SPRINGSIDE GAYGE 18**

**D:** SPRINGSIDE GAYGE

**COMMENTS**

A long bodied young bull with excellent skin and hair type. Sunny has a quiet nature and is a pleasure to work with. Homozygous polled and a handsome lighter bull that will breed great calves.

BUYER: ..... PRICE \$ .....

**LOT 5 SPRINGSIDE SYMINGTON (P)****VENDOR: Springside**

**ID:**  
PTRPS307

**DOB:**  
18/08/2021

**S:** BLUE DOG KALGOORLIE

**SIRE: SPRINGSIDE PACMAN**

**D:** SPRINGSIDE GAVRYL

**S:** WOONALLEE DIMENSION

**DAM: SPRINGSIDE LORRAINE 18**

**D:** SPRINGSIDE LORRAINE

**COMMENTS**

Symington is great natured soft bull with shape and added carcass depth. Great bone structure with muscle, strength and a great backline.

BUYER: ..... PRICE \$ .....

**LOT 6 SPRINGSIDE SKATER (P)****VENDOR: Springside**

**ID:**  
PTRPS102

**DOB:**  
17/07/2021

**S:** BLUE DOG KALGOORLIE

**SIRE: SPRINGSIDE PACMAN**

**D:** SPRINGSIDE GAVRYL

**S:** BULLOCKHILLS GLADIATOR

**DAM: WORMBETE KATE L102**

**D:** WORMBETE KATE G6

**COMMENTS**

Skater is a bull that has is all - length, height, smooth coat, great balance and bone strength. A good natured bull with plenty to add to any herd

BUYER: ..... PRICE \$ .....

**LOT 7 SPRINGSIDE SARAT (PP)****VENDOR: Springside**

**ID:**  
PTRPS323

**DOB:**  
04/12/2021

**S:** SVF STEEL FORCE S701

**SIRE: MR HOC BROKER**

**D:** JM BF H25

**S:** LFE BLACK LAKOTA 385W

**DAM: WOONALLEE KISS'N TELL J263**

**D:** LFE KISS & TELL 170R

**COMMENTS**

A sort after Mr Hoc Broker bull with the added bonus of the Woonallee Kiss N' Tell dam. Long bodied with softness and style and Homozygous Polled.

BUYER: ..... PRICE \$ .....

**LOT 8 SPRINGSIDE STEELE (PP)****VENDOR: Springside**

**ID:**  
PTRPS511

**DOB:**  
30/12/2021

**S:** WOONALLEE LICORICE L006

**SIRE: SPRINGSIDE PETROS**

**D:** SPRINGSIDE JILLY

**S:** LFE THE RIDDLER 323B

**DAM: SPRINGSIDE PETREEN**

**D:** SPRINGSIDE JETSTAR

**COMMENTS**

If you are looking for a bull that will produce exceptional calves, Steele fits the brief. Take a look into his lineage and you will agree that he has some of the best calf producing genes within the Black Simmental Breed.

BUYER: ..... PRICE \$ .....

## VENDOR PROFILE: Grangeburn Simmentals



**Brodhi Carracher**  
0418 723 996  
brodhicarracher@hotmail.com  
Glenelg Highway  
Wannon VIC 3301

Registering the prefix in 2013, Brodhi Carracher set home base for Grangeburn Simmental in Victoria's south-west at Wannon where extremes in season occur from scorching dry summers to waterlogged green winters. These conditions test the cattle year-round as they need to perform in the good times and the poor times.

Based on almost 700ha of grazing country, Grangeburn is currently running a commercial cow/calf operation alongside the seedstock operation of 120 registered Simmental and SimAngus females. On top of this the sheep enterprise produces prime lambs. No stone has been left unturned in the quest for genetics to breed the 'right type' for clients in both the northern or southern hemispheres. If it fits it is incorporated into the herd.

Grangeburn are in the industry to produce top end bulls for the astute cattlemen with value for money. Breeding traits are focused on mobility, durability, easy fleshing, slick skinned and well pigmented cattle with maternal calving ease.

To allow the cream to rise to the top with the above traits in mind Grangeburn prefers bulls to be run as one contemporary group from birth through to sale with minimal grain in their diet. The cheapest feed to produce per kilogram of dry matter is grass, so that's what Grangeburn cattle get until the scorching summer heat when they are given access to silage and low grain content pellets.

### LOT 9 GRANGEBURN SUPERNATURAL (P)

VENDOR: Grangeburn



**ID:**  
ZEUPS039

**DOB:**  
18/04/2021

**S:** CHAMPS BRAVO  
**SIRE: GRANGEBURN MASTERS PRIDE**  
**D:** WOONALLEE REGAL K13  
**S:** WOONALLEE ESSENDON  
**DAM: JURALEY DIAMOND K22**  
**D:** UPPER WINGAN DIAMOND

#### COMMENTS

Supernatural should be considered for many purposes including stud use! A correct bull in his structure but carries so much carcass and a nice skin type too. He's been one of our favourites since birth and hasn't looked back since, look to him for added frame whilst retaining thickness and shape.

BUYER: ..... PRICE \$ .....

### LOT 10 GRANGEBURN SPIDERBAIT (P)

VENDOR: Grangeburn



**ID:**  
ZEUPS035

**DOB:**  
14/04/2021

**S:** CHAMPS BRAVO  
**SIRE: GRANGEBURN MASTERS PRIDE**  
**D:** WOONALLEE REGAL K13  
**S:** WOONALLEE FLAME  
**DAM: JURALEY L007**  
**D:** WOONALLEE JULANI D127

#### COMMENTS

Spiderbait is an absolute powerhouse, with true length of spine coupled with a deep and soft carcass he's the power bull for us this year. Impeccable feet and is very mobile sire considering his mass. His dam is a very correct female who never misses, and she's produced another ripper!

BUYER: ..... PRICE \$ .....

**LOT 11 GRANGEBURN SPIN DOCTOR (H)****VENDOR: Grangeburn****ID:**  
ZEUPS012**DOB:**  
23/03/2021

**S:** JB WELLS OUTLAW 948W  
**SIRE: OUTBACK OF DOUBLE BAR D 255Y**  
**D:** PROSTOCK FERRARI 9052W  
**S:** GRANGEBURN MASTERS PRIDE  
**DAM: GRANGEBURN JEANNIE P16**  
**D:** JURALEY H128

**COMMENTS**

One of the first Outback sons on the market in Australia, and this bloke could get around the outback quite easily with his extra frame. A super mobile bull who isn't phased by anything. Super temperament, slick skin, great structure and cherry red. Top 3% WW, Top 4% YW, Top 2% EMA & Top 10% MARB.

BUYER: ..... PRICE \$ .....

**LOT 12 GRANGEBURN SCREAM MACHINE (S)****VENDOR: Grangeburn****ID:**  
ZEUPS036**DOB:**  
15/04/2021

**S:** CHAMPS BRAVO  
**SIRE: GRANGEBURN MASTERS PRIDE**  
**D:** WOONALLEE REGAL K13  
**S:** WOONALLEE FLAME  
**DAM: JURALEY L015**  
**D:** ROSEMONT PARK EVANA

**COMMENTS**

A real carcass improver here, masses of muscle down that topline and right through the hindquarter. Ample amounts of bone and from another cow that just doesn't miss. Full brother sold to Tugulawa Simmentals in 2022.

BUYER: ..... PRICE \$ .....

**LOT 13 GRANGEBURN SUDDEN IMPACT (H)****VENDOR: Grangeburn****ID:**  
ZEUPS005**DOB:**  
17/03/2021

**S:** JB WELLS OUTLAW 948W  
**SIRE: OUTBACK OF DOUBLE BAR D 255Y**  
**D:** PROSTOCK FERRARI 9052W  
**S:** WOONALLEE FIESTA  
**DAM: VALLEY CREEK JENNIFER**  
**D:** VALLEY CREEK POLLY

**COMMENTS**

A bull who'll add muscle to your calf crop. He was raised a twin himself so has had to do it on his own. Look to S5 to add early growth to your weaners and hit those target weights quickly. Top 1% EMA.

BUYER: ..... PRICE \$ .....



LOT 14

GRANGEBURN SANDMAN (P)

VENDOR: Grangeburn



ID:  
ZEUPS028

DOB:  
10/04/2021

S: BILLA PARK POLL CHURCHILL

SIRE: GRANGEBURN QUIET RIOT

D: MAVSTAR DAKOTA D708

S: WOONALLEE FLAME

DAM: GRANGEBURN NONSENSE M27

D: JURALEY ELLEN

COMMENTS

Some really top females in Sandman's pedigree, a real cowmaker with his added frame and length. He'll get around those big paddocks with ease. Polled and heavily pigmented.

BUYER: ..... PRICE \$ .....

LOT 15

GRANGEBURN SARGENT SHOTGUN (H)

VENDOR: Grangeburn



ID:  
ZEUPS049

DOB:  
13/05/2021

S: BILLA PARK POLL CHURCHILL

SIRE: GRANGEBURN QUIET RIOT

D: MAVSTAR DAKOTA D708

S: WOONALLEE FLAME

DAM: GRANGEBURN ONYX M37

D: UPPER WINGAN DIAMOND

COMMENTS

Sargent Shotgun will add width to those weaners as he carries a thick carcass type. Added depth of body from his dam who's now a donor in our herd for her impeccable phenotype and structure.

BUYER: ..... PRICE \$ .....

LOT 16

GRANGEBURN SLIM SHADY (P)

VENDOR: Grangeburn



ID:  
ZEUPS047

DOB:  
04/05/2021

S: BILLA PARK POLL CHURCHILL

SIRE: GRANGEBURN QUIET RIOT

D: MAVSTAR DAKOTA D708

S: WOONALLEE FLAME

DAM: GRANGEBURN JEANNIE M32

D: JURALEY GLEE

COMMENTS

Slim is anything but slim, he's a really deep moderate framed bull who has plenty of shape. Out of one of our top females for phenotype.

BUYER: ..... PRICE \$ .....



AuctionsPlus

# ONLINE BULL & FEMALE SALE

## Saturday February 3rd 2024



OFFERING:

10 TRADITIONAL SIRES

10 BLACK SIMMENTAL & SIMANGUS SIRES

10 REGISTERED FEMALES

2023 high selling bull, Grangeburn Secret Weapon

JBAS 7 Vaccinations: Pestigard, 7in1, Vibrovax, Botulinum, 3 day, 3 Germ



# GRANGEBURN SIMMENTALS



CHARLES  
**STEWART**  
LIVESTOCK



Broddhi Carracher 0418 723 996 [www.grangeburnsimmentals.com.au](http://www.grangeburnsimmentals.com.au)

# BonnydaleQLD | Black Simmentals

Jake Berghofer and Emma Patterson  
 0418 649 666  
 qld@bonnydalesimmentals.com  
 "Barambah Dale" Moffatdale QLD 4605

Bonnydale Black Simmentals is a family business built on hard work, patience and dedication coupled with an unwavering and passionate commitment to clients and the Australian beef industry. Our number one goal is to improve the profitability and sustainability of our customers businesses. We believe if we can achieve that through profit focused genetics and superior service, our customers will continue to support the Bonnydale program.

Bonnydale has a large pool of genetics working in varied climatic conditions – over 1000 registered and 1200 commercial females between our 2 herds in WA & QLD provides high selection pressure. This means that the 250 Bonnydale Bulls selected for sale each year are of extremely high quality. They combine excellent structure, softness with muscling, calving ease, do-ability with excellent temperament and superior genetic merit and predictability.

Each bull is offered for sale with parent verified pedigrees, genomic enhanced EPD's, free from genetic faults and comes with Bonnydale's unsurpassed after sales service guarantee. We DNA test every calf to deliver pedigree integrity and provide buyers with confidence in their selections.

The value offered by Bonnydale genetics continues to be endorsed by our satisfied clients.

Whether it be advising us of the terrific weight gain of their calves, excellent conception rates of their herd or the tremendous comments they receive from buyers. These endorsements motivate us to continue our pursuit of excellence in the product we deliver.

**LOT 17      BONNYDALE Q PATRIOT S96 (PP)      VENDOR: Bonnydale**



**ID:**  
BQD3S096

**DOB:**  
24/08/2021

**S:** HOOK'S BLACK HAWK 50B  
**SIRE: ASR AMERICAN PATRIOT F843**

**D:** ASR MS PRIMROSE D663

**S:** BONNYDALE LOAD TRACK

**DAM: BONNYDALE MS DESSI M149**

**D:** BONNYDALE MS DESI K150

**COMMENTS**

ASA (3997483) - a complete bull in a homozygous black & PP package. The first of 4 American Patriot sons selling as part of our draft this year. Long, carcase bull with butt shape and excellent temperament. Positive EPDs for growth and carcase traits

BUYER: ..... PRICE \$ .....

**LOT 18      BONNYDALE Q PROCLAMATION S121 (PP)      VENDOR: Bonnydale**



**ID:**  
BQDPS121

**DOB:**  
02/09/2021

**S:** CCR COWBOY CUT 5048Z

**SIRE: WS PROCLAMATION E202**

**D:** WS MISS SUGAR C4

**S:** BONNYDALE NEVADA N160

**DAM: BONNYDALE QLD GEORGIA Q019**

**D:** BONNYDALE GEORGIA M97

**COMMENTS**

ASA (3997480) - solid yet soft with good bone and super quiet. High ranking EPDs for growth and carcase traits - top 5% WW, top 10% YW, top 4% fat. Will add the kg where it counts. Homozygous Black and PP

BUYER: ..... PRICE \$ .....

**LOT 19 BONNYDALE DIVIDEND T50 (PP)**

**VENDOR: Bonnydale**



**ID:**  
MBBPT050

**DOB:**  
13/01/2022

**S:** CLRS DIVIDEND 405D

**SIRE: BONNYDALE DIVIDEND R43**

**D:** ASR LITTLE DESSI D6273

**S:** TNT TANKER U263

**DAM: BONNYDALE JOSSIE K103**

**D:** BONNYDALE JOSSIE G223

**COMMENTS**

ASA (4070001) - one of the picks of the draft this deep and solid Dividend son shows plenty of promise. Good shape, strong backline and easy handling, a good combinatino of carcase and softness. Homozygous Black and PP

BUYER: ..... PRICE \$ .....

**LOT 20 BONNYDALE JUSTICE T279 (PP)**

**VENDOR: Bonnydale**



**ID:**  
MBBPT279

**DOB:**  
07/02/2022

**S:** BBS TRUE JUSTICE B10

**SIRE: BONNYDALE TRUE JUSTICE P105**

**D:** ASR MS CAMILLE W967

**S:** BONNYDALE BLACK HAWK H274

**DAM: BONNYDALE GOLDIE K221**

**D:** BONNYDALE GOLDIE HAWN F250

**COMMENTS**

ASA (4070031) - meaty with lots of volume. Early maturing type with a good muscle pattern and plenty of length. Homozygous black and should be PP (awaiting DNA confirmation)

BUYER: ..... PRICE \$ .....

**LOT 21 BONNYDALE Q ELEMENT S138 (PP)**

**VENDOR: Bonnydale**



**ID:**  
BQDPS138

**DOB:**  
10/10/2021

**S:** GIBBS 3009A ELEMENT

**SIRE: BONNYDALE ELEMENT Q39**

**D:** ASR BLACK MIRANDA Y198

**S:** BONNYDALE KRUISER

**DAM: BONNYDALE LIL DESSI M104**

**D:** BONNYDALE LIL DESSI J155

**COMMENTS**

ASA (3997477) - impressive combination of carcase and doing ability in this well put together package. Positive EPDs for growth and carcase traits. Homozygous Black & PP. Better suited to cows than heifers

BUYER: ..... PRICE \$ .....

LOT 22

BONNYDALE Q PATRIOT S111 (PP)

VENDOR: Bonnydale

ID:  
BQD3S111

DOB:  
27/08/2021

No Photo Available

S: HOOK'S BLACK HAWK 50B  
SIRE: ASR AMERICAN PATRIOT F843  
D: ASR MS PRIMROSE D663  
S: BONNYDALE KRUISER  
DAM: BONNYDALE LIL DESSI M82  
D: BONNYDALE LIL DESSI J140

COMMENTS

ASA (3997472) - a bull with good frame and high ranking EPDs for growth. Homozygous black and PP

BUYER:..... PRICE \$.....

LOT 23

BONNYDALE DIVIDEND T145 (PP)

VENDOR: Bonnydale



ID:  
MBBPT145

DOB:  
21/01/2022

S: CLRS DIVIDEND 405D  
SIRE: BONNYDALE DIVIDEND R43  
D: ASR LITTLE DESSI D6273  
S: ASR AUGUSTUS Z2165  
DAM: BONNYDALE GRENADA L72  
D: BONNYDALE GRENADA J174

COMMENTS

ASA (4069870) - frame and length with a good topline typical of what we would expect from the Dividend line. Heterozygous black and PP

BUYER:..... PRICE \$.....

LOT 24

BONNYDALE ROOSEVELT T211 (PP)

VENDOR: Bonnydale



ID:  
MBBPT211

DOB:  
27/01/2022

S: CCR COWBOY CUT 5048Z  
SIRE: TJ ROOSEVELT 366E  
D: TJ 99A  
S: RCR AUGUSTUS R54  
DAM: BONNYDALE JOSIE N159  
D: BONNYDALE JOSSIE G204

COMMENTS

ASA (4069586) - deep ribbed, easy fleshing and extra bone with EPDs confirming his phenotype for growth and carcase - top 4% WW, top 5% YW, top 10% CW. Homozygous black and PP

BUYER:..... PRICE \$.....

**LOT 25 BONNYDALE Q PATRIOT S94 (PP)****VENDOR: Bonnydale**

**ID:**  
BQD3S094

**DOB:**  
23/08/2021

**COMMENTS**

ASA (3997511) - an easy doing, soft and quiet bull that ticks a lot of EPD boxes - top 2% for Milk, MWW and Yield, top 4% Fat and high positive figures for growth. Homozygous black and PP

**S:** HOOK'S BLACK HAWK 50B

**SIRE:** ASR AMERICAN PATRIOT F843

**D:** ASR MS PRIMROSE D663

**S:** BONNYDALE SA RANCH HAND M342

**DAM:** BONNYDALE QLD DESSY P024

**D:** BONNYDALE DESSY M80

BUYER: ..... PRICE \$ .....

**LOT 26 BONNYDALE Q PATRIOT S147 (PP)****VENDOR: Bonnydale**

**ID:**  
BQD3S147

**DOB:**  
31/08/2021

**COMMENTS**

ASA (3997492) - an upstanding type of bull with good skin standing on good legs and feet. A free moving sire with a good muscle pattern. Homozygous black

**S:** HOOK'S BLACK HAWK 50B

**SIRE:** ASR AMERICAN PATRIOT F843

**D:** ASR MS PRIMROSE D663

**S:** TNT TANKER U263

**DAM:** BONNYDALE GRANGE N52

**D:** BONNYDALE GRANGE H266

BUYER: ..... PRICE \$ .....

**LOT 27 BONNYDALE Q AUSTIN S146 (PP)****VENDOR: Bonnydale**

**ID:**  
BQDPS146

**DOB:**  
19/10/2021

**COMMENTS**

ASA (3997464) - deep and thick butted. Mid maturity pattern with data positioning him top 1% fat and top 5% yield. Homozygous black and PP

**S:** RCR AUGUSTUS R54

**SIRE:** BONNYDALE QLD AUSTIN P6

**D:** BONNYDALE CARLENE K185

**S:** TNT TANKER U263

**DAM:** BONNYDALE GLENDIVE M112

**D:** BONNYDALE GLENDIVE G217

BUYER: ..... PRICE \$ .....

**LOT 28 BONNYDALE Q BROAD RANGE S88 (PP)**

**VENDOR: Bonnydale**



**ID:**  
BQD3S088

**DOB:**  
20/08/2021

**S:** CCR WIDE RANGE 9005A

**SIRE: GIBBS 7382 BROAD RANGE**

**D:** SSF BLK LOUISE Y534

**S:** BONNYDALE SA RANCH HAND M342

**DAM: BONNYDALE QLD LIL DESSI Q040**

**D:** BONNYDALE LIL DESSI M104

**COMMENTS**

ASA (3997462) - moderate framed, square and meaty with a good hindquarter. Solid EPDs across the board for maternal traits, growth and carcass. Homozygous black and PP

BUYER: ..... PRICE \$ .....

**LOT 29 BONNYDALE Q NASHVILLE S103 (PP)**

**VENDOR: Bonnydale**



**ID:**  
BQDPS103

**DOB:**  
26/08/2021

**S:** W/C WIDE TRACK 694Y

**SIRE: BONNYDALE NASHVILLE N70**

**D:** ASR BLACK MIRANDA Y1121

**S:** TNT TANKER U263

**DAM: BONNYDALE DESSY M45**

**D:** BONNYDALE DESSY H256

**COMMENTS**

ASA (3997510) - long and super sleek. Has a white birthmark on his near side but is DNA tested Homozygous black and PP

BUYER: ..... PRICE \$ .....

**LOT 30 BONNYDALE Q BROAD RANGE S81 (PP)**

**VENDOR: Bonnydale**



**ID:**  
BQDPS081

**DOB:**  
18/08/2021

**S:** CCR WIDE RANGE 9005A

**SIRE: GIBBS 7382 BROAD RANGE**

**D:** SSF BLK LOUISE Y534

**S:** LRS UNLIMITED 752A

**DAM: BONNYDALE QLD LIL DESSI P035**

**D:** BONNYDALE LIL DESSI K183

**COMMENTS**

ASA (3997452) - mid maturity bull with good length, sleek skin and tidy sheath. Homozygous polled and Heterozygous black

BUYER: ..... PRICE \$ .....

**LOT 31 BONNYDALE QUAKER T212 (PP)**

**VENDOR: Bonnydale**



**ID:**  
MBBPT212

**DOB:**  
28/01/2022

**S:** OVAL F ALL TIME A322

**SIRE: BONNYDALE QUAKER**

**D:** ASR BLACK MIRANDA Y198

**S:** BONNYDALE NASHVILLE N70

**DAM: BONNYDALE LIL DESSI Q43**

**D:** BONNYDALE LIL DESSI L33

**COMMENTS**

ASA (4069972) - length and thickness that we'd expect from a Quaker son. Strong topline and good butt shape. Homozygous black

BUYER: ..... PRICE \$ .....

**LOT 32 BONNYDALE QUAKER T168 (PP)**

**VENDOR: Bonnydale**

**No Photo Available**

**ID:**  
MBBPT168

**DOB:**  
23/01/2022

**S:** OVAL F ALL TIME A322

**SIRE: BONNYDALE QUAKER**

**D:** ASR BLACK MIRANDA Y198

**S:** BONNYDALE KRUISER

**DAM: BONNYDALE LIL DESSI Q75**

**D:** BONNYDALE LIL DESSI L02

**COMMENTS**

ASA (4069919) - true to form Quaker son long and free moving. Phenotype backed up by strong EPDs for MWW (5%), growth (WW & YW 10%) and carcass (CW 3%, yield 10%, fat 4%)

BUYER: ..... PRICE \$ .....

**LOT 33 BONNYDALE Q ELEMENT S144 (PP)**

**VENDOR: Bonnydale**



**ID:**  
BQDPS144

**DOB:**  
13/10/2021

**S:** GIBBS 3009A ELEMENT

**SIRE: BONNYDALE ELEMENT Q39**

**D:** ASR BLACK MIRANDA Y198

**S:** RCR AUGUSTUS R54

**DAM: BONNYDALE QLD LIL DESSI N010**

**D:** BONNYDALE LIL DESSI D205

**COMMENTS**

ASA (3997501) - soft with a good muscle pattern on this clean coated Element son. Hetero black and PP

BUYER: ..... PRICE \$ .....



**LOT 34 BONNYDALE Q NASHVILLE S123 (PP)****VENDOR: Bonnydale**

**ID:**  
BQDPS123

**DOB:**  
06/09/2021

**S:** W/C WIDE TRACK 694Y

**SIRE:** BONNYDALE NASHVILLE N70

**D:** ASR BLACK MIRANDA Y1121

**S:** WOONALLEE HALF BACK

**DAM:** LAVARTA KLEOPATRA

**D:** LONG VALLEY CAPPUCINO

**COMMENTS**

Stylish and sleek skinned with good grame and backline. A slightly more standoffish bull from his Lavarta dam but she will also add frame and carcase as he matures. Homozygous black and PP

BUYER: ..... PRICE \$ .....

**LOT 35 BONNYDALE RAWHIDE T328 (PP)****VENDOR: Bonnydale**

**ID:**  
MBBPT328

**DOB:**  
08/03/2022

**S:** GIBBS 3009A ELEMENT

**SIRE:** BONNYDALE RAWHIDE

**D:** ASR MS DESI D6238

**S:** WLE LAST CALL Y716

**DAM:** BONNYDALE GYPSY N8

**D:** BONNYDALE GYPSY L87

**COMMENTS**

ASA (4069509) - the youngest of the draft at 17 months but you can see the exceptional type of bull he will mature to be. Plenty of length and depth with good skin and manners. ASA EPDs confirm his phenotype with top 3% for Carcase Weight (CW) and positive carcane traits. Homozygous black

BUYER: ..... PRICE \$ .....



**Black Simmental  
SimAngus  
Superblack**

**85 Bulls**

**WEDNESDAY  
30<sup>TH</sup> AUGUST  
ROMA SALE YARDS**



## VENDOR PROFILE: Mount Mooney



### MT MOONEY SIMMENTALS

Quentin and Renee Mooney  
0438 011 800  
renee@mtmooney.com.au  
Tintinara, SA, 5266

Mt Mooney Simmentals was established in 2008 after trialling many different British & European cattle breeds in our commercial beef operation. Ultimately, we landed with the Simmental breed as it possessed not only the desired attributes for our commercial beef operation but also aligned with our desire to enter the stud breeding market.

In addition to its own stud breeding enterprise Mt Mooney currently runs 200 commercial beef cows on two properties in the upper south east of South Australia (Tintinara). This commercial focus has enabled Mount Mooney to produce Simmental Bulls that achieve exceptional carcass results.

Over time Mt Mooney has purchased both heifers and bulls from some of the leading Simmental studs in the country and have undertaken an extensive embryo transplant program which has already displayed some very promising results. These years of effort, hard work and genetic selection has meant that Mount Mooney now has the consistency and volume of bulls to expand nationally and we are pleased to be part of the Queensland Simmental Bull Sale in Central Queensland.

#### LOT 36 MT MOONEY SAPIO (P)

VENDOR: Mt Mooney



**ID:**  
ZOMPS020

**DOB:**  
17/03/2021

**S:** WOONALLEE LOS ANGELES

**SIRE:** YERWAL EST POWER PLAY

**D:** YERWAL EST KOMPLEAT

**S:** WOONALLEE AFRICA

**DAM:** MT MOONEY LADY ARRABELLA

**D:** YERWAL EST ARRABELLA

#### COMMENTS

This bull is a larger framed, later maturing fella, he will add bone and carcass to all of his progeny. Sapio stands on good feet and legs and will add value to your breeding program with a strong female line behind him.

BUYER: ..... PRICE \$ .....

#### LOT 37 MT MOONEY SARGE (PP)

VENDOR: Mt Mooney



**ID:**  
ZOMPS026

**DOB:**  
18/06/2021

**S:** WOONALLEE LOS ANGELES

**SIRE:** YERWAL EST POWER PLAY

**D:** YERWAL EST KOMPLEAT

**S:** WOONALLEE KILKENNY

**DAM:** MT MOONEY PARTON

**D:** MT MOONEY LADY ARRABELLA

#### COMMENTS

Sarge is the complete package. Homozygous polled, extra frame, extra length yet still maintaining plenty of thickness, bone and muscle. He will cover plenty of territory. He is another bull that comes from a very strong female line that will continue to breed on.

BUYER: ..... PRICE \$ .....

LOT 38

MT MOONEY SMITHY (P)

VENDOR: Mt Mooney



ID:  
ZOMPS027

DOB:  
20/06/2021

S: WOONALLEE LOS ANGELES

SIRE: YERWAL EST POWER PLAY

D: YERWAL EST KOMPLEAT

S: WOONALLEE FETISH (SC)

DAM: MT MOONEY MAXINE

D: MT MOONEY HOPE

COMMENTS

Smithy is a bull that has real eye appael and a fantastic temperament, slick coated and easy doing sum this bull up.

BUYER: ..... PRICE \$ .....

LOT 39

MT MOONEY SHEEHAN (H)

VENDOR: Mt Mooney



ID:  
ZOMPS030

DOB:  
06/08/2021

S: WAI-ITI HIGH RISER

SIRE: GLEN ANTHONY Y-ARTA AY02

D: WILLOWBROOK URSULINA AU18

S: FGAF GUERRERO 810Y

DAM: MT MOONEY PRINCESS QUEBEC

D: MT MOONEY LACEY PRINCESS

COMMENTS

A heifers first calf that was born easily and thickened up very quick. Plenty of thickness down the spine with added depth of flank, He will add some serious grunt to his calves.

BUYER: ..... PRICE \$ .....

LOT 40

MT MOONEY STALLONE (H)

VENDOR: Mt Mooney



ID:  
ZOMPS037

DOB:  
11/10/2021

S: DAYTONS POL NEUMANN

SIRE: LFS POL BALBOA 40U

D: RRV NATALIE

S: BAR 5 SA BENZ 415L

DAM: MT MOONEY NOVA

D: YERWAL EST TAYLOR

COMMENTS

An outcross pedigree with perfect feet. He is a free moving heavy boned bull, whose dam is a large volumed, powerful, lighter coloured female.

BUYER: ..... PRICE \$ .....

**LOT 41 MT MOONEY SHAMROCK (PP)**

**VENDOR: Mt Mooney**



**ID:**  
ZOMPS038

**DOB:**  
15/10/2021

**S:** WOONALLEE LOS ANGELES

**SIRE: YERWAL EST POWER PLAY**

**D:** YERWAL EST KOMPLEAT

**S:** PHS BANK ROLL 345B

**DAM: MT MOONEY NICOLA**

**D:** YERWAL EST CASSIE

**COMMENTS**

Shamrock is a heavily pigmented bull that carries plenty of punch. He has extra length and will value add to your weaners.

BUYER: ..... PRICE \$ .....

**LOT 42 MT MOONEY SUPERROO (PP)**

**VENDOR: Mt Mooney**



**ID:**  
ZOMPS039

**DOB:**  
20/10/2021

**S:** WOONALLEE LOS ANGELES

**SIRE: YERWAL EST POWER PLAY**

**D:** YERWAL EST KOMPLEAT

**S:** WOONALLEE KILKENNY

**DAM: MT MOONEY PEAR**

**D:** MT MOONEY LAELA

**COMMENTS**

Superroo is the youngest bull in our line up, but you would never have known with his exceptional weight as a weaner, even being a twin.

BUYER: ..... PRICE \$ .....

**LOT 43 MT MOONEY SUPERDRY (H)**

**VENDOR: Mt Mooney**



**ID:**  
ZOMPS033

**DOB:**  
06/10/2021

**S:** SIBELLE DIRTY HARRY 25Z

**SIRE: PHS BANK ROLL 345B**

**D:** PHS YUMA

**S:** WOONALLEE HADAU

**DAM: YERWAL EST GIPSY**

**D:** YERWAL EST CASSIE

**COMMENTS**

Superdry has good eye pigment, slick skin and thickness. With a super strong female line this bull will add length, bone and muscle to your program.

BUYER: ..... PRICE \$ .....

## VENDOR PROFILE: Nangur Simmentals



Don and Gail Louis  
0429 192 610  
dgandglouis@bigpond.com  
5781 Burnett Highway  
GOOMERI, QLD 4601

After more than 40 years breeding in Goomeri, Queensland, Nangur Simmentals pride themselves on quiet, fast growing and fertile cattle suitable for the commercial cattle producer.

When you are on a good thing stick to it and Nangurs breeding objectives since 1985 remain the same today "to produce fast growing fertile and gentle bulls along with females known for their high pregnancy rate and calving ease". After 35 years Nangur females have a high fertility rate. The Stud Principal is also very particular about such important features as correct eye pigment, structural correctness and sound feet.

LOT 44 NANGUR SHAWN (H)

VENDOR: Nangur



ID:  
LODPS152

DOB:  
16/07/2021

S: FINALEE MOJO  
SIRE: LONE STATION PABLO  
D: CLAY GULLY FADE  
S: AUSSIE PARK ERNEST  
DAM: NANGUR M334  
D: NANGUR H249

### COMMENTS

A horned bull providing the typical punch and bone backed up with a strong sire appeal.

BUYER: ..... PRICE \$ .....

LOT 45 NANGUR SAWYER (H)

VENDOR: Nangur



ID:  
LODPS158

DOB:  
07/06/2021

S: FINALEE MOJO  
SIRE: LONE STATION PABLO  
D: CLAY GULLY FADE  
S: AUSSIE PARK ERNEST  
DAM: NANGUR J102  
D: NANGUR D181

### COMMENTS

A blonde bull providing a great carcass with well set in shoulders providing softness and balance.

BUYER: ..... PRICE \$ .....

**LOT 46****NANGUR SEBASTIAN (H)****VENDOR: Nangur****ID:**  
LODPS159**DOB:**  
11/06/2021**S:** TRINITY VALE HEWITT**SIRE: NANGUR P858****D:** NANGUR J102**S:** LUCRANA B060**DAM: NANGUR G234****D:** NANGUR D190**COMMENTS**

A bull not to pass by, this performance packed sire provides growth for age whilst maintain a carcass with punch. With true sire appeal this top performer will be hard to part with.

BUYER: ..... PRICE \$ .....

**LOT 47****NANGUR SETH (H)****VENDOR: Nangur****ID:**  
LODPS161**DOB:**  
11/06/2021**S:** TRINITY VALE HEWITT**SIRE: NANGUR P858****D:** NANGUR J102**S:** LUCRANA B060**DAM: NANGUR H260****D:** NANGUR B153**COMMENTS**

A bull with plenty of red meat and great carcass attributes.

BUYER: ..... PRICE \$ .....

**LOT 48****NANGUR SCOTT (H)****VENDOR: Nangur****ID:**  
LODPS162**DOB:**  
11/06/2021**S:** TRINITY VALE HEWITT**SIRE: NANGUR P858****D:** NANGUR J102**S:** AUSSIE PARK ERNEST**DAM: NANGUR P377****D:** NANGUR G232**COMMENTS**

Another typical Nangur bull with great feet, legs, bone, length and grunt.

BUYER: ..... PRICE \$ .....

LOT 49

NANGUR SERGIO (P)

VENDOR: Nangur



ID:  
LODPS163

DOB:  
15/06/2021

S: FINALEE MOJO  
SIRE: LONE STATION PABLO  
D: CLAY GULLY FADE  
S: AUSSIE PARK ERNEST  
DAM: NANGUR N352  
D: NANGUR J281

**COMMENTS**

If you are looking for length and the extra kilos that provides, then look no further than this young fellow with his lovely temperament and performance.

BUYER: ..... PRICE \$ .....

LOT 50

NANGUR SPENCER (H)

VENDOR: Nangur



ID:  
LODPS164

DOB:  
21/06/2021

S: FINALEE MOJO  
SIRE: LONE STATION PABLO  
D: CLAY GULLY FADE  
S: TRINITY VALE HEWITT  
DAM: NANGUR P805  
D: NANGUR K301

**COMMENTS**

Nangur continues to breed bulls with tremendous length and this fellow demonstrates it in spades.

BUYER: ..... PRICE \$ .....

LOT 51

NANGUR SHANE (H)

VENDOR: Nangur



ID:  
LODPS165

DOB:  
22/06/2021

S: TRINITY VALE HEWITT  
SIRE: NANGUR P858  
D: NANGUR J102  
S: AUSSIE PARK ERNEST  
DAM: NANGUR P364  
D: NANGUR G229

**COMMENTS**

Fantastic muscles expression and thickness right through his hindquarter, thickness and overall tremendous carcass bull.

BUYER: ..... PRICE \$ .....



**LOT 52****NANGUR SILAS (P)****VENDOR: Nangur****ID:**  
LODPS167**DOB:**  
22/06/2021**S:** TRINITY VALE HEWITT**SIRE: NANGUR P858****D:** NANGUR J102**S:** AUSSIE PARK ERNEST**DAM: NANGUR K304****D:** NANGUR D181**COMMENTS**

Another horned bull providing plenty of bone, structure and muscle expression. The Nangur bulls

BUYER: ..... PRICE \$ .....

**LOT 53****NANGUR SELWYN (S)****VENDOR: Nangur****No Photo Available****ID:**  
LODPS168**DOB:**  
27/06/2021**S:** TRINITY VALE HEWITT**SIRE: NANGUR P858****D:** NANGUR J102**S:** AUSSIE PARK ERNEST**DAM: NANGUR J274****D:** NANGUR E210**COMMENTS**

Well-muscled, with a sires head, grunt, volume and carcass. Plenty of performance whilst maintaining sound feet & leg structure.

BUYER: ..... PRICE \$ .....

**LOT 54****NANGUR SHELDON (P)****VENDOR: Nangur****ID:**  
LODPS170**DOB:**  
17/07/2021**S:** FINALEE MOJO**SIRE: LONE STATION PABLO****D:** CLAY GULLY FADE**S:** AUSSIE PARK ERNEST**DAM: NANGUR N355****D:** NANGUR J102**COMMENTS**

Bull with a lovely topline and plenty of length muscle and great potential

BUYER: ..... PRICE \$ .....

**LOT 55****NANGUR STILLMAN (P)****VENDOR: Nangur**

**ID:**  
LODPS171

**DOB:**  
23/07/2021

**S:** TRINITY VALE HEWITT

**SIRE: NANGUR P858**

**D:** NANGUR J102

**S:** AUSSIE PARK ERNEST

**DAM: NANGUR M338**

**D:** NANGUR B153

**COMMENTS**

Another Nangur bull providing structural integrity, excellent muscle expression and performance.

BUYER: ..... PRICE \$ .....

**LOT 56****NANGUR STANLEY (H)****VENDOR: Nangur**

**ID:**  
LODPS173

**DOB:**  
29/07/2021

**S:** FINALEE MOJO

**SIRE: LONE STATION PABLO**

**D:** CLAY GULLY FADE

**S:** LUCRANA B060

**DAM: NANGUR G242**

**D:** NANGUR C169

**COMMENTS**

Well muscled, with plenty of thickness. A great sirey outlook with well hooded eyes. Structurally correct standing on good bone.

BUYER: ..... PRICE \$ .....

**LOT 57****NANGUR SYDNEY (PP)****VENDOR: Nangur**

**No Photo Available**

**ID:**  
LODPS174

**DOB:**  
05/08/2021

**S:** FINALEE MOJO

**SIRE: LONE STATION PABLO**

**D:** CLAY GULLY FADE

**S:** AUSSIE PARK ERNEST

**DAM: NANGUR N356**

**D:** NANGUR J277

**COMMENTS**

Homozygous Polled [PcPc] This mobile fellow tracks out well and would certainly cover the country whilst including plenty of carcass and performance. Good feet & legs with plenty of bone.

BUYER: ..... PRICE \$ .....

## VENDOR PROFILE: Lone Station Simmental Stud



Steven Manwill  
0416 229 171

smanwill@pharosinvestments.com.au  
1154 Kipper Creek Road  
Biarra, QLD 4313

Lone Station Simmental Bulls are known for a clean coat type, consistency in growth, structural correctness, sound feet and being bred in heavy tick coastal country. Lone Station Simmental females have been carefully selected for calving ease, fertility, growth rate of progeny, clean coat type and eye colouring/pigmentation

Lone Station Simmental Bulls are working today in commercial herds all across Queensland at locations including Banana, Marlborough, Moura, Sarina, Nebo, Theodore, Charters Towers, Clermont, Alpha and more.

Lone Station Simmental Stud has sold stud sires and females to numerous Queensland based Simmental Stud operations (including two of the oldest established). Lone Station Bulls are also often sort after for commercial cattle operations in heavy tick and lantana country.

2020, 2021 and 2022 saw Lone Station Simmentals unable to supply enough bulls to meet demand from existing and new clients.

LOT 58

LONE STATION STATHAM (P)

VENDOR: Lone Station



**ID:**  
LSNPS130

**DOB:**  
27/08/2021

**S:** CLAY GULLY JAYKO  
**SIRE: LONE STATION QUATTRO**

**D:** LONE STATION LILLY

**S:** NOANGA CARLTON

**DAM: LONE STATION KATHRYN**

**D:** CLAY GULLY EMOTION

### COMMENTS

Get up close on Sunday at the bull walk to appreciate Lone Station Statham (P). Pedigree shows homozygous poll Carlton who retained plenty of bone and sired durable females now proven during last drought. View this calf with mum prior to weaning at Lone Station Simmentals on Facebook.

BUYER: ..... PRICE \$ .....

LOT 59

LONE STATION STANLEY (P)

VENDOR: Lone Station



**ID:**  
LSNPS131

**DOB:**  
06/09/2021

**S:** CLAY GULLY JAYKO  
**SIRE: LONE STATION QUATTRO**

**D:** LONE STATION LILLY

**S:** NOANGA CARLTON

**DAM: LONE STATION KALA**

**D:** CLAY GULLY DIMITY

### COMMENTS

Another poll sire by Lone Station Quattro (P)- top 3% for sale price achieved in 2021 QSBS (86 lots). Structurally correct with plenty of bone to hang kilograms of beef on those Bos Indicus X calves.

BUYER: ..... PRICE \$ .....

LOT 60

LONE STATION TATUM (P)

VENDOR: Lone Station



**ID:**  
LSNPT138

**DOB:**  
20/01/2022

**S:** CLAY GULLY JAYKO

**SIRE:** LONE STATION QUATTRO

**D:** LONE STATION LILLY

**S:** NOANGA CARLTON

**DAM:** LONE STATION KARISSA

**D:** CLAY GULLY GYPSY G347

**COMMENTS**

At just over 18 months on sale day, Lone Station Tatum (P) is the youngest bull and only T draft lot catalogued in this year's Queensland Simmental Bull Sale. Tatum represents a young, Traditional Simmental Sire displaying length, slick coat type and structural correctness. Hooves show an even and light preparation yet Tatum has still achieved this weight at age in heavy tick country.

BUYER: ..... PRICE \$ .....

**VENDOR PROFILE: Yerwal Estate**



Regan and Connie Burow  
0419 817 669  
regan@yerwalestate.com  
Lawreys Road  
NARACOORTE SA 5271

Yerwal Estate Simmental stud is a 600ha grazing property situated 45kms south west of Naracoorte in South Australia in 1963.

By the mid 80s Yerwal Estate was running 250 to 300 pure bred Simmental females and participating in an annual bull sale at Millicent. Yerwal saw great success in this sale, topping the average 4 out of 5 years. For a number of years Yerwal Estate has been selling bulls to many different parts of the country including the south-east of South Australia, Victoria, Central and Northern New South Wales, Northern South Australia, Northern Territory, Central Queensland and far Western Queensland. The stud has also sold embryos to central Queensland and has a good understanding of both the genetic and nutritional preparation requirements for cattle going into these climates.

Yerwal Estate aims to produce bulls that are sound, moderate framed, easy fleshing, athletic, soft and well pigmented. Yerwal Estate bulls are good footed, sound structured animals that will stand up on any soil type barring injury.

LOT 61

YERWAL EST SMOKEY (P)

VENDOR: Yerwal Estate



**ID:**  
AMOPS304

**DOB:**  
12/04/2021

**S:** WAI-ITI HIGH RISER

**SIRE:** GLEN ANTHONY Y-ARTA AY02

**D:** WILLOWBROOK URSULINA AU18

**S:** WOONALLEE BHR TORNADO

**DAM:** MT MOONEY LACEY PRINCESS

**D:** YERWAL EST FUTURE PRINCESS

**COMMENTS**

Smokey is the first of five full flush ET brothers to sell in our draft. We believe he is an outstanding stud sire prospect. He's thick, well muscled, polled, good footed, soft and docile making him a fantatsic overall package to add to your breeding program.

BUYER: ..... PRICE \$ .....

**LOT 62 YERWAL EST SINGLE BARREL (P)**

**VENDOR: Yerwal Estate**



**ID:**  
AMOPS300

**DOB:**  
04/04/2021

**S:** WAI-ITI HIGH RISER

**SIRE: GLEN ANTHONY Y-ARTA AY02**

**D:** WILLOWBROOK URSULINA AU18

**S:** WOONALLEE BHR TORNADO

**DAM: MT MOONEY LACEY PRINCESS**

**D:** YERWAL EST FUTURE PRINCESS

**COMMENTS**

Single Barrel will add some real muscle and shape to your calves. His carcass should be a huge asset in any program. Proven pedigree behind him that will add value to any herd.

BUYER: ..... PRICE \$ .....

**LOT 63 YERWAL EST SNIPPER (PP)**

**VENDOR: Yerwal Estate**



**ID:**  
AMOPS303

**DOB:**  
12/04/2021

**S:** WAI-ITI HIGH RISER

**SIRE: GLEN ANTHONY Y-ARTA AY02**

**D:** WILLOWBROOK URSULINA AU18

**S:** WOONALLEE BHR TORNADO

**DAM: MT MOONEY LACEY PRINCESS**

**D:** YERWAL EST FUTURE PRINCESS

**COMMENTS**

Snipper is a real stand out oozing style, bone, muscle and overall sire presence. He's long, homozygous polled, well pigmented, mobile and good footed. Not one to be over looked.

BUYER: ..... PRICE \$ .....

**LOT 64 YERWAL EST SUPREME (P)**

**VENDOR: Yerwal Estate**



**ID:**  
AMOPS306

**DOB:**  
13/04/2021

**S:** WAI-ITI HIGH RISER

**SIRE: GLEN ANTHONY Y-ARTA AY02**

**D:** WILLOWBROOK URSULINA AU18

**S:** WOONALLEE BHR TORNADO

**DAM: MT MOONEY LACEY PRINCESS**

**D:** YERWAL EST FUTURE PRINCESS

**COMMENTS**

Supreme is not all that different to the previous lot, he may even give a fraction more depth of body, another standout in this line of full flush brothers.

BUYER: ..... PRICE \$ .....

**LOT 65 YERWAL EST SOVEREIGN (PP)**

**VENDOR: Yerwal Estate**



**ID:**  
AMOPS066

**DOB:**  
13/04/2021

**S:** NLC PROGRESSIVE 40C

**SIRE: NLC GEN TEN 82E**

**D:** NLC A109 AMBER

**S:** MR NLC SUPERIOR S6018

**DAM: YERWAL EST CHARO J59**

**D:** LFE CHARO 604G

**COMMENTS**

Sovereign is a heavy boned, larger framed black Simmental, well suited to producing those heavy flat back weaners

BUYER: ..... PRICE \$ .....

**LOT 66 YERWAL EST SENATOR (P)**

**VENDOR: Yerwal Estate**



**ID:**  
AMOPS017

**DOB:**  
02/03/2021

**S:** SPRINGCREEK LOTTO 52Y

**SIRE: YERWAL EST LOTTO**

**D:** GOOMABURRA TRISHA Z211

**S:** HART STATE OF WAR 056C

**DAM: YERWAL EST Q301**

**D:** YERWAL EST CHARO J59

**COMMENTS**

Senator is built like an absolute tank. He is extremely well made with a huge top. We rated him very high as a yearling a used him in our SimAngus program.

BUYER: ..... PRICE \$ .....

**LOT 67 YERWAL EST SUPER DRY (PP)**

**VENDOR: Yerwal Estate**



**ID:**  
AMOPS025

**DOB:**  
08/03/2021

**S:** SPRINGCREEK LOTTO 52Y

**SIRE: YERWAL EST LOTTO**

**D:** GOOMABURRA TRISHA Z211

**S:** WLB BOUNTY HUNTER 365C

**DAM: YERWAL EST CHARO Q304**

**D:** YERWAL EST CHARO J59

**COMMENTS**

Super Dry is a heavy boned black sire with a heap of thump, he will certainly add dollars to your weaners.

BUYER: ..... PRICE \$ .....

**LOT 68**

**YERWAL EST SUPER CHARGE (PP)**

**VENDOR: Yerwal Estate**



**ID:**  
AMOPS365

**DOB:**  
27/09/2021

**S:** SPRINGCREEK LOTTO 52Y

**SIRE: YERWAL EST LOTTO**

**D:** GOOMABURRA TRISHA Z211

**S:** TNT TANKER U263

**DAM: YERWAL EST KATARINA J62**

**D:** LFE KATARINA 58K

**COMMENTS**

Super Charge is one of the youngest bulls in our draft. His frame, growth and weight for age is brilliant. Slick coated, very mobile and structurally sound.

BUYER: ..... PRICE \$ .....

**LOT 69**

**YERWAL EST SHOCK PROOF (PP)**

**VENDOR: Yerwal Estate**



**ID:**  
AMOPS301

**DOB:**  
06/04/2021

**S:** DCR MR MOON SHINE X102

**SIRE: TNT 90 PROOF Z401**

**D:** TNT MISS S17

**S:** MR NLC SUPERIOR S6018

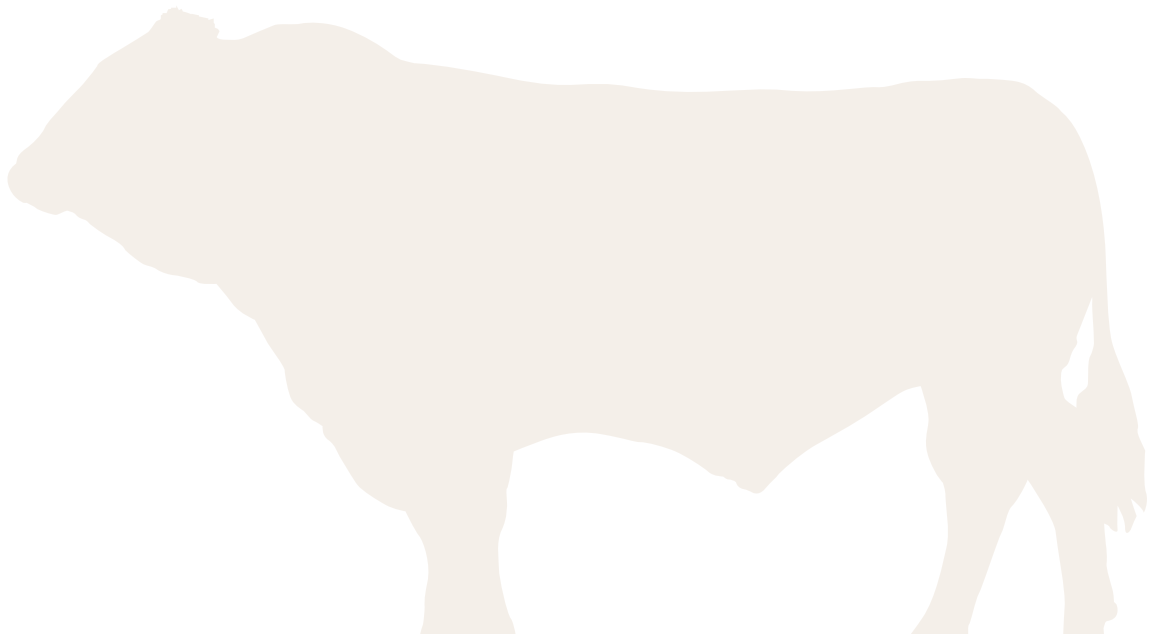
**DAM: YERWAL EST CHARO J59**

**D:** LFE CHARO 604G

**COMMENTS**

The one and only red simmental in our draft by the outstanding 90 proof, out of our number one proven black donor J059. He is extremely thick and has carcass to burn.

BUYER: ..... PRICE \$ .....



# YERWAL ESTATE

## Simmental and Angus Stud

Over 180 Simmental and Angus Bulls will be offered by Yerwal Estate at their Annual On Property Sale, the Queensland Simmental Bull Sale and other selling outlets in 2024.



Our top priced Simmental bull sold for \$34,000 at the 2022 Queensland Simmental Bull Sale. Yerwal Estate Rockhampton sold to D&A Humphries of Jericho, Queensland to who run a large scale Simbrah program.

We pride ourselves in producing sound, commercially focused cattle that have maturity and muscle patterns, with doing ability to adapt and thrive in most parts of Australia. Our bulls are based at Dalma, Queensland for several months prior to sale day to ensure they are well adapted to the Queensland climate.

For further information  
please contact Regan Burow

M 0419 817 669

T/F 08 8769 6168

E [regan@yerwalestate.com](mailto:regan@yerwalestate.com)



 Find us on  
Facebook





## VENDOR PROFILE: The Wilgas



Courtney and Joel  
0476 639 925

thewilgassimmentals@outlook.com  
160 Lees Rd, Duri NSW 2344

The Wilgas comprises the best animals retained from what was formally known as the Lavarta Simmental Stud along with selected genetics bred and/or purchased by Joel Trim and Courtney Newlands. Their herd consists of predominantly Traditional Simmentals and includes many influential and desirable genetics well known within the Simmental Breeding Industry.

The Wilgas believes that the Traditional Simmental has a bright future as the preferred cross of choice over high grade Bos Indicus cattle and the Wilgas are dedicated to breeding for the all important Queensland market. The Wilgas has also established an impressive battery of AI Sires which will become a focus in the coming years and Joel and Courtney look forward to presenting bulls with some exciting new genetics suitable for the Queensland commercial or stud cattle producers in the years to come.

### LOT 70 THE WILGAS SYMPHONY (P)

VENDOR: The Wilgas



**ID:**  
JCTPS020

**DOB:**  
01/08/2021

**S:** LRX HP ROCKET 23Y

**SIRE:** LAVARTA MATRIX

**D:** LANGTON-GATE AUTUMN GIRL

**S:** WOONALLEE DIMENSION

**DAM:** LAVARTA MELODY

**D:** WOONALLEE HEIDI B9

#### COMMENTS

Symphony is the only Matrix bull to sell in '23 and there is a lot to like about the power and depth of this bull. He was selected for his overall soundness, length of body and exceptional temperament. Look to Symphony to put the song in your calves.

BUYER: ..... PRICE \$ .....

### LOT 71 THE WILGAS SPARTAN (P)

VENDOR: The Wilgas



**ID:**  
JCTPS035

**DOB:**  
19/09/2021

**S:** MAGPIE PARK MASTER

**SIRE:** WOONALLEE PRETZEL

**D:** WOONALLEE REGAL L14

**S:** WOONALLEE DIMENSION

**DAM:** LAVARTA NO APOLOGIES

**D:** GOOMABURRA PRINCESS E227

#### COMMENTS

Spartan at 21 months is a thickset Pretzel son with plenty of grunt. Spartan has stood out from an early age for his extra power and performance. He is structurally correct, hard to miss and hard not to be impressed by. Top 20% YWT, Top 15% CW & Top 15% MWWT.

BUYER: ..... PRICE \$ .....

**LOT 72 THE WILGAS SAN FRANCISCO (P)****VENDOR: The Wilgas**

**ID:**  
JCTPS015

**DOB:**  
01/07/2021

**COMMENTS**

San Francisco is an impressive polled Woonallee Las Vegas son offering ample depth and capacity. He is out of a first calf heifer and is backed with performance style and muscling. San Fran will appeal to those looking to add weight to their herd. Top 15% WWT, Top 20% YWT, Top 3% MWWT & Top 10% CW.

**S:** GLEN ANTHONY Y-ARTA AY02

**SIRE: WOONALLEE LAS VEGAS**

**D:** WOONALLEE KATHIE B111

**S:** MAGPIE PARK MASTER

**DAM: WOONALLEE POLLY P288**

**D:** WOONALLEE POLLY L20

BUYER: ..... PRICE \$ .....

**LOT 73 THE WILGAS SCORPION (P)****VENDOR: The Wilgas**

**ID:**  
JCTPS014

**DOB:**  
28/06/2021

**COMMENTS**

Scorpion is another stand out sire out of a first calving heifer. He is a Kerrah son out of Woonallee Firefly P267 packed with genetic strength. Scorpion has plenty to offer he is polled and structurally correct with extra length and ample bone. Top 10% WWT & YWT, Top 1% CW & Top 20% REA.

**S:** KERRAH AWESOME A404

**SIRE: KERRAH E307**

**D:** KERRAH B38

**S:** WOONALLEE LAS VEGAS

**DAM: WOONALLEE FIREFLY P267**

**D:** WOONALLEE FIREFLY K37

BUYER: ..... PRICE \$ .....

**LOT 74 THE WILGAS SAN REMO (P)****VENDOR: The Wilgas**

**ID:**  
JCTPS029

**DOB:**  
31/08/2021

**COMMENTS**

San Remo is a polled Pretzel son. He is a moderate framed, dark red, double goggled bull carrying plenty of thickness and class. San Remo will do a job for any operation. Top 15% BWT & Top 15% MCE.

**S:** MAGPIE PARK MASTER

**SIRE: WOONALLEE PRETZEL**

**D:** WOONALLEE REGAL L14

**S:** WOONALLEE DIMENSION

**DAM: LAVARTA MIKA**

**D:** SPRINGSIDE HOLLYANDA

BUYER: ..... PRICE \$ .....

LOT 75

HIGHRISE SAIFITI (S)

VENDOR: The Wilgas



ID:  
HRLPS003

DOB:  
26/06/2021

S: TNT TANKER U263

SIRE: WOONALLEE HALF BACK

D: LFE CHARO 604G

S: JB CDN HENNESSY 5005

DAM: HIGHRISE CHARLIE P002

D: HIGHRISE CHARLIE

COMMENTS

Saifiti is the first black simmental bull offered by The Wilgas. He is a true to type white blazed Half Back son. Saifiti is hetero black, polled, moderate framed with strong carcass traits. He is sound and functional. Top 10% BWT, Top 30% REA & Top 20% FAT.

BUYER: ..... PRICE \$ .....

LOT 76

HIGHRISE SON OF BROKER (P)

VENDOR: The Wilgas

No Photo Available

ID:  
HRLPS001

DOB:  
19/06/2021

S: SVF STEEL FORCE S701

SIRE: MR HOC BROKER

D: JM BF H25

S: SS EBONYS GRANDMASTER

DAM: HIGHRISE CHARLIE J004

D: HIGHRISE CHARLIE C01

COMMENTS

Son of Broker is a HOC Broker son, who catches your eye with his 'bling'. He is a polled, hetero black bull who impresses us with his wonderful balance, length and smoothness. Son of Broker's Dam is one of our favourites in herd who consistently breeds quality. Top 20% BWT & Top 10% FAT.

BUYER: ..... PRICE \$ .....

LOT 77

THE WILGAS SAAB (PP)

VENDOR: The Wilgas



ID:  
JCTPS031

DOB:  
09/09/2021

S: MAGPIE PARK MASTER

SIRE: WOONALLEE PRETZEL

D: WOONALLEE REGAL L14

S: WOONALLEE FOREFRONT

DAM: SPRINGSIDE LINLY

D: SPRINGSIDE HILLARY

COMMENTS

Saab, as his name suggests is packed full of power. He is an outstanding Pretzel son that has impressed us with his growth. Saab is a dark red homozygous polled bull with extra depth and capacity. He is a well-muscled bull with great length and is as sound as they come. Top 30% in 6 traits.

BUYER: ..... PRICE \$ .....

**LOT 78 THE WILGAS STAMP OF APPROVAL (P)**

**VENDOR: The Wilgas**



**ID:**  
JCTPS010

**DOB:**  
20/06/2021

**S:** MAGPIE PARK MASTER

**SIRE: WOONALLEE PRETZEL**

**D:** WOONALLEE REGAL L14

**S:** WOONALLEE DIMENSION

**DAM: THE WILGAS POP APPROVED**

**D:** WOONALLEE JEANNIE C45

**COMMENTS**

Stamp of Approval AKA SOA is a polled Pretzel son. He is dark cherry red with depth, capacity and is an easy doing bull. SOA is an attractive bull with plenty of power and substance.

BUYER: ..... PRICE \$ .....

**LOT 79 THE WILGAS SHERIFF YOU WANT TO (P)**

**VENDOR: The Wilgas**



**ID:**  
JCTPS036

**DOB:**  
20/09/2021

**S:** MAGPIE PARK MASTER

**SIRE: WOONALLEE PRETZEL**

**D:** WOONALLEE REGAL L14

**S:** WOONALLEE DIMENSION

**DAM: LAVARTA NEVER FORGET ME**

**D:** SPRINGSIDE HOLLYANDA

**COMMENTS**

Sheriff you want to is yet another polled Pretzel son. At only 21 months of age he has plenty of growing left to do. Sheriff is a nicely balanced bull with plenty of softness and style. He is an easy doing, free moving bull carrying ample muscle and depth. Within Top 20% of BWT, CE, MCE & FAT.

BUYER: ..... PRICE \$ .....

**LOT 80 THE WILGAS SOUND OF SILENCE (P)**

**VENDOR: The Wilgas**



**ID:**  
JCTPS037

**DOB:**  
27/09/2021

**S:** MAGPIE PARK MASTER

**SIRE: WOONALLEE PRETZEL**

**D:** WOONALLEE REGAL L14

**S:** WOONALLEE DIMENSION

**DAM: THE WILGAS PITCH PERFECT**

**D:** WOONALLEE HEIDI B9

**COMMENTS**

Sound of Silence is the youngest of the draft and not to be overlooked. He is a dark red, polled Pretzel son out of a first calving heifer, he is a free moving bull with a sound structure and a great temperament. Ranks well within his performance indicators.

BUYER: ..... PRICE \$ .....

LOT 81

HIGHRISE SOD (PP)

VENDOR: The Wilgas



**ID:**  
HRLPS004

**DOB:**  
08/09/2021

**S:** MAGPIE PARK MASTER

**SIRE:** WOONALLEE PRETZEL

**D:** WOONALLEE REGAL L14

**S:** JB CDN HENNESSY 5005

**DAM:** HIGHRISE WILLOW N1

**D:** HIGHRISE WILLOW

#### COMMENTS

SOD is the last bull of our draft and what a note to finish on. He is a homozygous polled Pretzel son with plenty of growth. SOD is a long bodied bull with great thickness and capacity. He is an extremely sound sire with mobility and style. Ranks well above average in 7 EPD traits.

BUYER: ..... PRICE \$ .....

### VENDOR PROFILE: Daraabah Fleckvieh Simmentals



**Bruce and Melinda McColl**  
0429 750 590  
bruce@daraabah.com.au  
7R Jones Creek Road  
Dubbo NSW 2830

Daraabah Fleckvieh Simmental is a family operation running 120 breeders on properties at Dubbo and Merrygoen in Central West NSW . The stud was formed in 2011 after using Simmental and Fleckvieh cattle in our commercial herds since the mid 1980s. We found the South African genetics that came to Australia in the early 2000s matched our ideals. These genetics form the basis of the Daraabah herd.

Daraabah operates on a mantra of 'Our performance, your profit'. Our performance is based on integrity, effort, passion and progression. Your profit (gain, advantage, benefit) is our focus. In turn, that becomes our profit.

In the short period since 2011, we have strived to establish ourselves as producers of high quality, market suitable cattle. Our 2021 QSBS results and buyer feedback have been greatly encouraging and indicate that we are on the right track in producing the type of bulls that the market demands. Our bulls are successfully working in herds from Victoria, to Bourke, to Alpha, to Charters Towers and everywhere in-between.

LOT 82

DARAABAH SHOWMAN (P)

VENDOR: Daarabah



**ID:**  
DBHPS192

**DOB:**  
16/10/2021

**S:** GLEN ANTHONY Y-ARTA AY02

**SIRE:** JARRVALE PHARAOH

**D:** JARRVALE LYDIA

**S:** BRENAIR PARK LEMAIR L142

**DAM:** DARAABAH PHOEBE P841

**D:** DARAABAH LIBBY L520

#### COMMENTS

Leading off our draft with this stylish, clean coated, long bodied polled bull that ticks all the right boxes. One of the younger bulls on offer but still offers plenty of performance, natural softness and docility in a tidy package. Positive EPD traits for weight gain, fat and marbling.

BUYER: ..... PRICE \$ .....

**LOT 83****GLENANNA SKIPPY (PP)****VENDOR: Daarabah**

**ID:**  
MMMPS188

**DOB:**  
03/10/2021

**S:** ANCHOR T RUSTY 59G

**SIRE:** STARWEST POL BLUEPRINT

**D:** PHS HOMOZYGOUS XCEPTIONAL

**S:** NEWLANDS FINNIGAN

**DAM:** GLENANNA NIPPY

**D:** GLENANNA HIANNA H204

**COMMENTS**

One of the standouts in the draft for his sheer performance, style and sire appeal. Homozygous polled and dilution free. Out of our top female line, his maternal brother topped our draft last year. He's just as good on paper, in the Top 5% for his Terminal Index. Semen retained for in herd use only.

BUYER: ..... PRICE \$ .....

**LOT 84****DARAABAH SHAZAM (PP)****VENDOR: Daarabah**

**ID:**  
DBHPS190

**DOB:**  
11/10/2021

**S:** GLEN ANTHONY Y-ARTA AY02

**SIRE:** JARRAVALLE PHARAOH

**D:** JARRAVALLE LYDIA

**S:** DARAABAH JUMPING JACK FLASH J3

**DAM:** DARAABAH MAGGIE MAY M610

**D:** DARAABAH WONDENIA GOLDYLOCKS G

**COMMENTS**

A homozygous polled, growthy sire with a bomb proof temperament. This bull oozes softness, stretch and class and is in the Top 10% percent of the breed for Fat, Weaning and Yearling Weights.

BUYER: ..... PRICE \$ .....

**LOT 85****DARAABAH SENSATION (P)****VENDOR: Daarabah**

**ID:**  
DBHPS178

**DOB:**  
16/09/2021

**S:** GLEN ANTHONY Y-ARTA AY02

**SIRE:** JARRAVALLE PHARAOH

**D:** JARRAVALLE LYDIA

**S:** NEWLANDS GREGOR

**DAM:** DARAABAH NEWLANDS MARTIE L031

**D:** NEWLANDS MARTIE J019

**COMMENTS**

Sensation by name and by nature, he has always expressed explosive growth for age, extra frame and that eye catching phenotype. A polled, all rounder type bull with plenty of bone, a balanced EPD set and above average indexes.

BUYER: ..... PRICE \$ .....

**LOT 86****DARAABAH SCHMICK (PP)****VENDOR: Daarabah**

**ID:**  
DBHPS168

**DOB:**  
28/08/2021

**COMMENTS**

Homozygous polled bull with performance plus. In the Top 5 percent for carcass weight, weaning and yearling weights. He has impressive length, bone and overall thickness. Naturally easy doing and docile.

**S:** GLEN ANTHONY Y-ARTA AY02

**SIRE: JARRAVALÉ PHARAOH**

**D:** JARRAVALÉ LYDIA

**S:** DARAABAH HOUSTON H253

**DAM: DARAABAH MARTHA M611**

**D:** DARAABAH KALEA K401

BUYER: ..... PRICE \$ .....

**LOT 87****GLENANNA SUTTON (P)****VENDOR: Daarabah**

**ID:**  
MMMPS191

**DOB:**  
11/10/2021

**COMMENTS**

A high performance bull that is as soft and soggy as they come. Strong muzzled, deep and plenty of bone with plenty of eye hooding and massive daily weight gain and high terminal index. Very similar in type to his proven bull making sire, Jarravale Pharaoh (PP).

**S:** GLEN ANTHONY Y-ARTA AY02

**SIRE: JARRAVALÉ PHARAOH**

**D:** JARRAVALÉ LYDIA

**S:** WIRRABILLA EMBER WIRPE044 (ET)

**DAM: GLENANNA WONDENIA HIDEY H761**

**D:** WONDENIA EVE

BUYER: ..... PRICE \$ .....

**LOT 88****DARAABAH SAMSON (PP)****VENDOR: Daarabah**

**ID:**  
DBHPS173

**DOB:**  
09/09/2021

**COMMENTS**

Homozygous polled bull with extreme growth and weight with that extra lift whilst retaining depth and balance. A high index sire with a well balanced EPD set.

**S:** GLEN ANTHONY Y-ARTA AY02

**SIRE: JARRAVALÉ PHARAOH**

**D:** JARRAVALÉ LYDIA

**S:** DARAABAH JUMPING JACK FLASH J3

**DAM: DARAABAH MINDY M617**

**D:** DARAABAH WONDENIA GINGER G665

BUYER: ..... PRICE \$ .....

LOT 89

DARAABAH SALVATION (PP)

VENDOR: Daarabah



ID:  
DBHPS194

DOB:  
25/10/2021

S: GLEN ANTHONY Y-ARTA AY02

SIRE: JARRAVALÉ PHARAOH

D: JARRAVALÉ LYDIA

S: DARAABAH HOUSTON H253

DAM: DARAABAH LAYLA L519

D: NEWLANDS EXPRESSO E410

COMMENTS

Homozygous polled bull with high weight for age. Strong muzzled, heavy boned with plenty of grunt, in all the right ways. A well balanced EPD set and in the Top 15% for the All Purpose Index.

BUYER: ..... PRICE \$ .....

LOT 90

DARAABAH SPINIFIX (P)

VENDOR: Daarabah



ID:  
DBHPS197

DOB:  
16/11/2021

S: GLEN ANTHONY Y-ARTA AY02

SIRE: JARRAVALÉ PHARAOH

D: JARRAVALÉ LYDIA

S: NEWLANDS FINNIGAN

DAM: DARAABAH NIANNA N709

D: WONDENIA DIANNA

COMMENTS

One of these soft, easy doing blonde bulls. The youngest bull in the draft but it hasn't stopped him from keeping up with his mates for growth and performance. By our leading stud sire Jarravale Pharoah.

BUYER: ..... PRICE \$ .....

LOT 91

DARAABAH SKIP (P)

VENDOR: Daarabah



ID:  
DBHPS175

DOB:  
14/09/2021

S: GLEN ANTHONY Y-ARTA AY02

SIRE: JARRAVALÉ PHARAOH

D: JARRAVALÉ LYDIA

S: BARANA MADRID

DAM: DARAABAH QUALI T

D: DARAABAH MG M618

COMMENTS

A long bodied, polled blonde bull with correct feet and legs. He is in the Top 10% of the breed for yearling and weaning weights.

BUYER: ..... PRICE \$ .....



**LOT 92 DARAABAH STARBUCK (P)**

**VENDOR: Daarabah**



**ID:**  
DBHPS179

**DOB:**  
16/09/2021

**S:** GLEN ANTHONY Y-ARTA AY02

**SIRE:** JARRVALE PHARAOH

**D:** JARRVALE LYDIA

**S:** NEWLANDS GREGOR

**DAM:** DARAABAH NEWLANDS MARTIE L031

**D:** NEWLANDS MARTIE J019

**COMMENTS**

A twin to Lot 85 who did it a bit tougher growing up. But that hasn't stopped him from being a high performance, stretchy, free moving, polled bull with plenty of muscle expression. High growth EPDs and in the Top 10% for his terminal index.

BUYER: ..... PRICE \$ .....

**LOT 93 GLENANNA SUN DAZE (H)**

**VENDOR: Daarabah**



**ID:**  
MMMPS195

**DOB:**  
25/10/2021

**S:** ANCHOR T RUSTY 59G

**SIRE:** STARWEST POL BLUEPRINT

**D:** PHS HOMOZYGOUS XCEPTIONAL

**S:** PHS POLLED WORLDWIDE 14W

**DAM:** GLENANNA MILLIE M615

**D:** GLENANNA WONDENIA GLENICE (AI)

**COMMENTS**

A big topped, wide bull with one of the highest daily weight gains in the draft. Out of one of our highest performance dams that has been shown with great success. In the Top 5% for his all purpose index and Top 10% for his Terminal Index.

BUYER: ..... PRICE \$ .....

**LOT 94 DARAABAH STERLING (PP)**

**VENDOR: Daarabah**



**ID:**  
DBHPS174

**DOB:**  
11/09/2021

**S:** WAI-ITI HIGH RISER

**SIRE:** GLEN ANTHONY Y-ARTA AY02

**D:** WILLOWBROOK URSULINA AU18

**S:** DARAABAH KIKSUM K469

**DAM:** DARAABAH PIXIE P810

**D:** DARAABAH LINDI L506

**COMMENTS**

Homozygous polled, low birth weight, calving ease specialist. Sits in the Top 2 % of the breed for direct and maternal calving ease. One that catches your eye in terms of his style, natural muscle expression, correct structure and quiet temperament.

BUYER: ..... PRICE \$ .....

**LOT 95****DARAABAH SUBLIME (H)****VENDOR: Daarabah**

**ID:**  
DBHPS183

**DOB:**  
27/09/2021

**COMMENTS**

The only bull in the draft by our home bred stud sire Daraabah Kiksum and he certainly left his mark on this one. A dark red bull with plenty of muscle expression, structural correctness and stretch.

**S:** NEWLANDS FINNIGAN

**SIRE: DARAABAH KIKSUM K469**

**D:** DARAABAH WONDENIA FLUTE F548

**S:** GLEN ANTHONY Y-ARTA AY02

**DAM: GLENANNA POLLY P809**

**D:** DARAABAH HULA GIRL H202

BUYER: ..... PRICE \$ .....

**LOT 96****DARAABAH SCORCHER (P)****VENDOR: Daarabah**

**ID:**  
DBHPS172

**DOB:**  
04/09/2021

**COMMENTS**

A polled, super sleek coated, dilution free bull who ranks in the Top 10% of the breed for birth weight, calving ease and carcase weight.

**S:** VIRGINIA MAXIMUS

**SIRE: ANCHOR D RAPTOR 392C**

**D:** ANCHOR D ZILEY 392Z

**S:** NEWLANDS JAGGER J066

**DAM: DARAABAH NEWLANDS GEZAMI M012**

**D:** NEWLANDS GEZAMI E022

BUYER: ..... PRICE \$ .....

**LOT 97****DARAABAH SQUIRE (P)****VENDOR: Daarabah**

**ID:**  
DBHPS196

**DOB:**  
16/11/2021

**COMMENTS**

A heifers first calf but a job well done on this young bull. A phenotypically correct, polled, naturally soft type with a tidy underline.

**S:** GLEN ANTHONY Y-ARTA AY02

**SIRE: JARRAVAL PHARAOH**

**D:** JARRAVAL LYDIA

**S:** BRENAIR PARK LEMAIR L142

**DAM: DARAABAH QUILANI Q932**

**D:** DARAABAH NALANI N725

BUYER: ..... PRICE \$ .....

LOT 98

DARAABAH SPIFFY (H)

VENDOR: Daarabah



**ID:**  
DBHPS180

**DOB:**  
19/09/2021

**S:** FGAF SELDOM 835L

**SIRE:** FGAF GUERRERO 810Y

**D:** NOSSATERRA REAL WISH 69U

**S:** PHS POLLED WORLDWIDE 14W

**DAM:** DARAABAH QUELL Q918

**D:** DARAABAH NELL N702

#### COMMENTS

A phenotypically correct sire with plenty of muscle expression. Another calving ease specialist, in the Top 1% for Direct Calving Ease. Top 5% for Milk, Marbling and his All Purpose Index. Top 15% for his Terminal index

BUYER: ..... PRICE \$ .....

### VENDOR PROFILE: Tullayr Simmentals



George Wragge  
0410 014 754  
tullayr@gmail.com  
PO Box 281, Scone NSW 2337

Tullayr Simmentals is a family run Simmental Stud located just North of Scone in the Upper Hunter of NSW. As a family operation, George, his wife Georgia and parents Liz and Mike all contribute to the stud's success. Tullayr prides themselves on having honest cattle with outstanding temperaments suitable for a wide range of cattle markets.

Tullayr Simmentals consistently places bulls into local herds through paddock sales, whilst also selling successfully through multi-vendor bull sales into the Northern Rivers of NSW and Central Queensland cattle markets for close to a decade. Our inclusion in the Queensland Simmental bull sale further cements our commitment to the Queensland cattle market.

A commitment to sourcing leading genetics has led Tullayr to invest heavily in the cow herd through ET and AI programs and this has accelerated endeavours to deliver a product we are proud to stand behind. Our clients breeding objectives is at the forefront in our minds meaning an animal needs the ability to get about on a structurally sound set of feet and legs, be sleek coated and well pigmented, largely polled, moderately framed all with a quiet temperament. All calves are weighed at birth and along with continued objective measurements and strict physical selection. Buyers can be assured that Tullayr are presenting an animal that has had the guess work taken out if it.

LOT 99

TULLAYR SHOTGUN (PP)

VENDOR: Tullayr



**ID:**  
ZGWPS609

**DOB:**  
04/06/2021

**S:** LANCASTER E-TYPE E074

**SIRE:** SAVANNAH JON BON JOVI

**D:** CORINDADOWNS DHARMA

**S:** ULMARRA GARTH

**DAM:** TULLAYR M1222

**D:** WONDENIA YUNESCO

#### COMMENTS

609 is a bull that oozes carcass merit and is the heaviest bull in our draft. An early maturing bull that exhibits plenty of growth, yield, depth of body and overall muscle expression. A structurally sound, polled bull with a clean coat, clean sheath and functional outlook.

BUYER: ..... PRICE \$ .....

**LOT 100 TULLAYR SUPERSTAR (PP)****VENDOR: Tullayr**

**ID:**  
ZGWPS613

**DOB:**  
14/06/2021

**S:** LANCASTER E-TYPE E074  
**SIRE: SAVANNAH JON BON JOVI**  
**D:** CORINDADOWNS DHARMA  
**S:** ULMARRA GARTH  
**DAM: TULLAYR LADY**  
**D:** TULLAYR GERTIE

**COMMENTS**

613 is a bull that has plenty of stretch and strength of spine on a really mobile set of feet and legs. A deep red bull with dark goggle eyes and clean coat type. A bull that is smooth in through the shoulders with a mid maturity pattern. One for the heavier export market breeder.

BUYER: ..... PRICE \$ .....

**LOT 101 TULLAYR SURETHING S105 (P)****VENDOR: Tullayr**

**ID:**  
ZGWPS105

**DOB:**  
16/09/2021

**S:** GLEN ANTHONY Y-ARTA AY02  
**SIRE: WOONALLEE LOS ANGELES**  
**D:** WOONALLEE KATHIE B111  
**S:** NEWLANDS ZHIVAGO AU335  
**DAM: TULLAYR GERTIE**  
**D:** TULLAYR DOT

**COMMENTS**

105 is a bull out of arguably one our best cows. This powerful young bull will be sure to put some punch in his progeny, with stud sire potential. A sleek coated, mobile, goggle eyed, polled bull with plenty of muscle expression along his back into his hindquarter, naturally balanced.

BUYER: ..... PRICE \$ .....

**LOT 102 TULLAYR SAN DIAGO S015 (H)****VENDOR: Tullayr**

**ID:**  
ZGWPS015

**DOB:**  
23/09/2021

**S:** GLEN ANTHONY Y-ARTA AY02  
**SIRE: WOONALLEE LOS ANGELES**  
**D:** WOONALLEE KATHIE B111  
**S:** NEWLANDS ZHIVAGO AU335  
**DAM: TULLAYR GERTIE**  
**D:** TULLAYR DOT

**COMMENTS**

015 is a full flush brother to S105 and as result depicts a lot of the same characteristics as his brother, however is horned. The breeding has some of the most widely recognised genetics in a package that is sure to deliver for his purchaser. Good legs and feet, well pigmented and a sleek coat.

BUYER: ..... PRICE \$ .....

**LOT 103 TULLAYR STILL ASTUTE S045 (PP)**

**VENDOR: Tullayr**



**ID:**  
ZGWPS045

**DOB:**  
18/09/2021

**S:** CDI AUTHORITY 77X

**SIRE: BOUNDARY ASTUTE 4C**

**D:** KIMLAKE MARIE 840U

**S:** DCR MR MOON SHINE X102

**DAM: SAVANNAH ZOE M04**

**D:** LANCASTER BLANCHE G114

**COMMENTS**

045 is a boundary astute son and is growing into every bit of the sire, his sire is. Structural correctness through his shoulders down through his feet and legs makes him a highly mobile bull. A moderate framed Red bull in the top 10% for Birthweight and 20% for calving ease.

**BUYER:** ..... **PRICE \$** .....

**LOT 105 TULLAYR SALE-O SALE-O S013 (PP)**

**VENDOR: Tullayr**



**ID:**  
ZGWPS013

**DOB:**  
14/09/2021

**S:** CDI AUTHORITY 77X

**SIRE: BOUNDARY ASTUTE 4C**

**D:** KIMLAKE MARIE 840U

**S:** DCR MR MOON SHINE X102

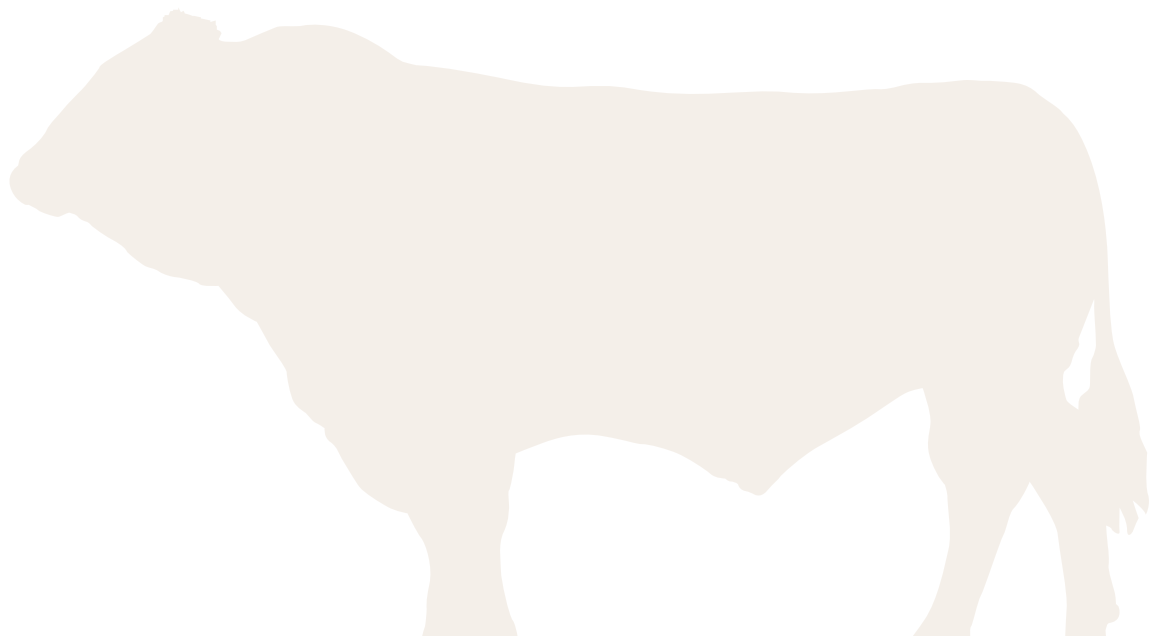
**DAM: SAVANNAH ZOE M04**

**D:** LANCASTER BLANCHE G114

**COMMENTS**

013 like his full flush brother S045 is growing into a really desirable sire. These Astute sons being moderate framed are truly functional and will have the tendency to lay down fat sooner and marble, with S013 being in the top 10% and 25% for breed average for said traits respectively.

**BUYER:** ..... **PRICE \$** .....



## VENDOR PROFILE: Jarravale Simmentals



Allan Jarrett

0427 331 204

jarravalepastoral@bigpond.com

45 Greenpigeon Road,  
Horseshoe Creek, Kyogle, NSW 2474

Run by fifth generation cattle producers, Jarravale Simmentals aspire to produce excellent quality Simmental genetics that will produce more beef for farming operations to enhance their profitability. Jarravale Simmentals is located near Kyogle on the Far North Coast of NSW with a breeding herd of over 100 registered females. During the past decade Jarravale Simmentals has seen increasing demand for quality bulls from both their local market and the wider Simmental community.

The Jarravale breeding program is focused on consistent, high-performing female lines that are fertile, structurally correct and wean heavy calves. Jarravale believes that the cow herd is the driver of performance in the beef industry. We select for industry relevant traits including: calving ease, carcass weight, fat coverage and performance on grass and grain. To achieve our goals we have and continue to heavily use embryo transfer and artificial insemination. To continue to improve our cow herd we source the best sires we can find globally that are backed by strong female lines and display the traits that our commercial clients require to put more money in their back pocket.

Our commitment to sourcing leading global genetics is demonstrated by travelling to visit leading Simmental cattle studs in North America and selecting embryos and semen from the lines that we believe will suit our Australian conditions.

LOT 106 JARRA VALE SENSATION S42 (P)

VENDOR: Jarravale

**ID:**  
JRVPS042

**DOB:**  
20/07/2021

No Photo Available

**S:** BIG HILLS CANE 62B

**SIRE:** GRINALTA'S HP SENSATION FF909D

**D:** GRINALTA'S FRITA-PPFF109W

**S:** GLEN ANTHONY Y-ARTA AY02

**DAM:** JARRA VALE SASHA P009

**D:** JARRA VALE LYDIA

### COMMENTS

Powerful, polled sire from an exceptional maternal line. Great indexes, TI in top 5% and top 10% for weaning and yearling weight. Will add dollars to your weaners. From a cow family that continues to produce outstanding sires.

BUYER: ..... PRICE \$ .....

LOT 107 JARRA VALE SUPERIOR S100 (P)

VENDOR: Jarravale



**ID:**  
JRVPS100

**DOB:**  
29/08/2021

**S:** BAR 5 SA GLOVER 854T

**SIRE:** JARRA VALE NORMANDY

**D:** BHR SERENA SA 150N

**S:** PHS POLLED WORLDWIDE 14W

**DAM:** JARRA VALE LYDIA

**D:** GIBBONS SASHA

### COMMENTS

An absolute performance sire. Long, deep bodied bull that had great growth as a yearling. A maternal brother to last years top price Jarravale bull.

BUYER: ..... PRICE \$ .....

LOT 108

JARRAVALÉ SHOCKWAVE S67 (PP)

VENDOR: Jarravale



ID: JRVPS067

DOB: 03/08/2021

S: CROSSROAD VINTAGE 125Z  
SIRE: CROSSROAD POLLED FUTURE  
D: CROSSROAD ZELESTE 19Z  
S: LUCRANA PIERMONT  
DAM: LUCRANA LIBBY  
D: LUCRANA DIMITY

COMMENTS  
Homo polled sire with lots of softness and style.

BUYER: ..... PRICE \$ .....

LOT 109

JARRAVALÉ GOMEZ S56 (P)

VENDOR: Jarravale



ID: JRVPS056

DOB: 28/07/2021

S: TOPWEIGHT DIRECTOR  
SIRE: WILLANDRA GOMEZ  
D: WILLANDRA DIANA Z26  
S: BAR 5 SA PIONA 04 817N  
DAM: JARRAVALÉ KARTYA  
D: WOONALLEE ELENA H17

COMMENTS  
Larger framed bull with great skin type. This bull will cover a lot of ground with correct feet and legs.

BUYER: ..... PRICE \$ .....

LOT 110

JARRAVALÉ SENSATION S45 (PP)

VENDOR: Jarravale



ID: JRVPS045

DOB: 24/07/2021

S: BIG HILLS CANE 62B  
SIRE: GRINALTA'S HP SENSATION FF909D  
D: GRINALTA'S FRITA-PPFF109W  
S: GLEN ANTHONY Y-ARTA AY02  
DAM: JARRAVALÉ SASHA P014  
D: JARRAVALÉ LYDIA

COMMENTS  
Homo polled , long bodied bull with exceptional temperament. His dam is a full sister of our first lot.

BUYER: ..... PRICE \$ .....

**LOT 111 JARRVALE SENSATION S46 (P)**

**VENDOR: Jarravale**



**ID:**  
JRVPS046

**DOB:**  
25/07/2021

**COMMENTS**

Very long, medium stature bull. EPD's in the top 1% for milk and Maternal weaning weight.

**S:** BIG HILLS CANE 62B

**SIRE: GRINALTA'S HP SENSATION FF909D**

**D:** GRINALTA'S FRITA-PPFF109W

**S:** STARWEST TOTAL VALUE

**DAM: JARRVALE VASTI N63**

**D:** WOONALLEE VASTI B117

BUYER: ..... PRICE \$ .....

**LOT 112 JARRVALE BLUEPRINT S20 (P)**

**VENDOR: Jarravale**



**ID:**  
JRVPS020

**DOB:**  
24/02/2021

**COMMENTS**

Hard to fault, exceptional bull that we used as a service sire in our stud herd last spring. EPD's rank top 5% for API and 10% for TI.

**S:** ANCHOR T RUSTY 59G

**SIRE: STARWEST POL BLUEPRINT**

**D:** PHS HOMOZYGOUS XCEPTIONAL

**S:** PHS POLLED WORLDWIDE 14W

**DAM: JARRVALE JACINTA**

**D:** BARANA GRACE G40

BUYER: ..... PRICE \$ .....

**LOT 113 JARRVALE BLUEPRINT S32 (P)**

**VENDOR: Jarravale**



**ID:**  
JRVPS032

**DOB:**  
08/03/2021

**COMMENTS**

Very long bull with lots of great carcass traits. Top 10% for API and TI EPD's.

**S:** ANCHOR T RUSTY 59G

**SIRE: STARWEST POL BLUEPRINT**

**D:** PHS HOMOZYGOUS XCEPTIONAL

**S:** BHR THREE SIXES SA L666E

**DAM: JARRVALE KRYSTAL**

**D:** WOONALLEE POLLY WAFFLE

BUYER: ..... PRICE \$ .....



**LOT 114 JARRVALE BLUEPRINT S69 (P)**

**VENDOR: Jarravale**

**ID:**  
JRVPS069

**DOB:**  
06/08/2021

**No Photo Available**

**S:** ANCHOR T RUSTY 59G  
**SIRE: STARWEST POL BLUEPRINT**  
**D:** PHS HOMOZYGOUS XCEPTIONAL  
**S:** LRX HP ROCKET 23Y  
**DAM: JARRVALE POLLYWAFFLE N031**  
**D:** JARRVALE KRystal

**COMMENTS**

The third Pol Blueprint bull in our lineup. Medium frame, long bodied bull from an exceptional donor cow. Has a maternal brother as a stud sire in the Clay Gully & Biarra Valley herds. Top 10% for TI, Weaning and Yearling weight EPD's.

BUYER: ..... PRICE \$ .....

**LOT 115 JARRVALE MATTEO S99 (PP)**

**VENDOR: Jarravale**



**ID:**  
JRVPS099

**DOB:**  
30/08/2021

**S:** LRX HP ROCKET 23Y  
**SIRE: JARRVALE MATTEO**  
**D:** JARRVALE JACINTA  
**S:** GLEN ANTHONY Y-ARTA AY02  
**DAM: JARRVALE GLADYS Q17**  
**D:** JARRVALE KATE

**COMMENTS**

Homo polled, great temperament bull from one of our best Y-Arta daughters. By a home bred sire who has left some impressive calves.

BUYER: ..... PRICE \$ .....

**LOT 116 JARRVALE NORMANDY S80 (P)**

**VENDOR: Jarravale**



**ID:**  
JRVPS080

**DOB:**  
19/08/2021

**S:** BAR 5 SA GLOVER 854T  
**SIRE: JARRVALE NORMANDY**  
**D:** BHR SERENA SA 150N  
**S:** GRINALTA'S HP KING 126S  
**DAM: TUGULAWA HESTER H525**  
**D:** TUGULAWA BEATRICE

**COMMENTS**

Cherry red bull walking on a good set of feet and legs.

BUYER: ..... PRICE \$ .....

**LOT 117 JARRVALE NORMANDY S85 (P)****VENDOR: Jarravale****ID:**  
JRVPS085**DOB:**  
21/08/2021
**S:** BAR 5 SA GLOVER 854T  
**SIRE: JARRVALE NORMANDY**  
**D:** BHR SERENA SA 150N  
**S:** JARRVALE KING  
**DAM: JARRVALE GLADYS N046**  
**D:** BARANA GLADYS
**COMMENTS**

Similar type to the previous lot but with a high EPD for Milk, top 3%.

BUYER: ..... PRICE \$ .....

**LOT 118 JARRVALE BROAD RANGE S44 (P)****VENDOR: Jarravale****ID:**  
JRVPS044**DOB:**  
23/07/2021
**S:** CCR WIDE RANGE 9005A  
**SIRE: GIBBS 7382 BROAD RANGE**  
**D:** SSF BLK LOUISE Y534  
**S:** WOONALLEE HALF BACK  
**DAM: LAVARTA LILLIE**  
**D:** LAVARTA HEART BEAT
**COMMENTS**

A bull that exhibits lots of capacity and style. The Broad Range calves are looking the goods. Great calving ease and doability.

BUYER: ..... PRICE \$ .....

**LOT 119 JARRVALE PROCLAMATION S70 (PP)****VENDOR: Jarravale****ID:**  
JRVPS070**DOB:**  
07/08/2021
**S:** CCR COWBOY CUT 5048Z  
**SIRE: WS PROCLAMATION E202**  
**D:** WS MISS SUGAR C4  
**S:** SRS RIGHT-ON 22R  
**DAM: LANCASTER HENRIETTA H90**  
**D:** LANCASTER HENRIETTA
**COMMENTS**

An exceptional bull to finish with. Top 4% for both API and TI indexes. By the great US sire Proclamation from our leading Black donor cow. As a bonus Homo polled and Homo black.

BUYER: ..... PRICE \$ .....

## VENDOR PROFILE: Yerwal Estate



Regan and Connie Burow  
0419 817 669  
regan@yerwalestate.com  
Lawreys Road  
NARACORTE SA 5271

Yerwal Estate Simmental stud is a 600ha grazing property situated 45kms south west of Naracoorte in South Australia in 1963.

By the mid 80s Yerwal Estate was running 250 to 300 pure bred Simmental females and participating in an annual bull sale at Millicent. Yerwal saw great success in this sale, topping the average 4 out of 5 years. For a number of years Yerwal Estate has been selling bulls to many different parts of the country including the south-east of South Australia, Victoria, Central and Northern New South Wales, Northern South Australia, Northern Territory, Central Queensland and far Western Queensland. The stud has also sold embryos to central Queensland and has a good understanding of both the genetic and nutritional preparation requirements for cattle going into these climates.

Yerwal Estate aims to produce bulls that are sound, moderate framed, easy fleshing, athletic, soft and well pigmented. Yerwal Estate bulls are good footed, sound structured animals that will stand up on any soil type barring injury.

### LOT 120 YERWAL EST SAHARA (P)

VENDOR: Yerwal Estate



**ID:**  
AMOPS308

**DOB:**  
18/04/2021

**S:** WAI-ITI HIGH RISER

**SIRE:** GLEN ANTHONY Y-ARTA AY02

**D:** WILLOWBROOK URSULINA AU18

**S:** WOONALLEE BHR TORNADO

**DAM:** MT MOONEY LACEY PRINCESS

**D:** YERWAL EST FUTURE PRINCESS

#### COMMENTS

Sahara is the last of the full flush ET brothers and brings a lot of the same attributes, he is well muscled, docile and good footed.

BUYER: ..... PRICE \$ .....

### LOT 121 YERWAL EST STRIKER (PP)

VENDOR: Yerwal Estate



**ID:**  
AMOPS147

**DOB:**  
01/07/2021

**S:** WOONALLEE JUMBO

**SIRE:** BARANA NOTTINGHAM

**D:** BARANA GOSSIP GIRL

**S:** WOONALLEE LOS ANGELES

**DAM:** YERWAL EST MISS ANGELES P3

**D:** YERWAL EST FUTURE PRINCESS H68

#### COMMENTS

Striker is a big frame soft bull that goes back to the record breaking Woonallee Los Angeles. He is polled with full pigment.

BUYER: ..... PRICE \$ .....

**LOT 122 YERWAL EST SPIDER-MAN (P)**

**VENDOR: Yerwal Estate**



**ID:**  
AMOPS256

**DOB:**  
20/09/2021

**S:** KERRAH YAMAHA AY417

**SIRE:** KERRAH DEFENDER D620

**D:** KERRAH AW8020

**S:** WOONALLEE BHR TORNADO

**DAM:** MT MOONEY LACEY PRINCESS

**D:** YERWAL EST FUTURE PRINCESS

**COMMENTS**

Spider-Man comes with an out-cross pedigree on the sire side. He has impeccable structure and gives you a fantastic balance of bone, muscle and growth. He is also one of the younger bulls in the draft.

BUYER: ..... PRICE \$ .....

**LOT 123 YERWAL EST STRYKER (P)**

**VENDOR: Yerwal Estate**



**ID:**  
AMOPS217

**DOB:**  
20/07/2021

**S:** WOONALLEE JUMBO

**SIRE:** BARANA NICKSON

**D:** BARANA GAYE

**S:** WOONALLEE HADAU

**DAM:** YERWAL EST GEORGIE

**D:** YERWAL EST CASSIE

**COMMENTS**

Stryker is a heavy muscled, pander eyed Nickson son, he is very docile and should compliment any program.

BUYER: ..... PRICE \$ .....

**LOT 124 YERWAL EST ST GEORGE (PP)**

**VENDOR: Yerwal Estate**



**ID:**  
AMOPS213

**DOB:**  
18/07/2021

**S:** WOONALLEE JUMBO

**SIRE:** BARANA NICKSON

**D:** BARANA GAYE

**S:** TENNYSONVALE LANE

**DAM:** YERWAL EST P086

**D:** YERWAL EST BAMBI J113

**COMMENTS**

St George is a moderate, thick and soft sire with an awesome temperament.

BUYER: ..... PRICE \$ .....

**LOT 125 YERWAL EST SUB ZERO (H)**

**VENDOR: Yerwal Estate**



**ID:**  
AMOPS165

**DOB:**  
20/08/2021

**S:** WOONALLEE JUMBO  
**SIRE: BARANA NICKSON**  
**D:** BARANA GAYE  
**S:** PIPER COUGAR  
**DAM: YERWAL EST FANTASIA**  
**D:** YERWAL EST DONATELLA

**COMMENTS**

Sub Zero is a heavy muscled, square made, moderate framed sire that will add plenty of punch to his progeny.

BUYER: ..... PRICE \$ .....

**LOT 126 YERWAL EST STRIKE FORCE (PP)**

**VENDOR: Yerwal Estate**



**ID:**  
AMOPS170

**DOB:**  
15/09/2021

**S:** WOONALLEE JUMBO  
**SIRE: BARANA NICKSON**  
**D:** BARANA GAYE  
**S:** TENNYSONVALE LANE  
**DAM: YERWAL EST PRINCESS P40**  
**D:** YERWAL EST H50

**COMMENTS**

Strike Force is a young bull with plenty of frame and muscle. Given the opportunity, he will continue to grow into an impressive sire.

BUYER: ..... PRICE \$ .....

**LOT 127 YERWAL EST SAVVY (P)**

**VENDOR: Yerwal Estate**



**ID:**  
AMOPS234

**DOB:**  
03/10/2021

**S:** TENNYSONVALE MERRICK  
**SIRE: YERWAL EST QUANTUM PHYSICS**  
**D:** YERWAL EST MISS COMPLETE M82  
**S:** YERWAL EST COPPERFIELD  
**DAM: YERWAL EST BABY DOLL G46**  
**D:** YERWAL EST BABY DOLL

**COMMENTS**

Savvy is another young bull with a heap of potential. He has excellent frame, shape and muscle. He is cherry red, goggle eyed and polled.

BUYER: ..... PRICE \$ .....



**ID:**  
AMOPS204

**DOB:**  
21/07/2021

**S:** BARANA EMOTION

**SIRE:** BARANA LAZARETH

**D:** 2DIAMOND6 DAISY

**S:** YERWAL EST CASANOVA

**DAM:** YERWAL EST FIFI

**D:** YERWAL EST BAMBI

#### COMMENTS

Slick is by name and by nature he is super smooth made, cherry red and has a fine slick coat. He is polled with full pigment and has a great temperament.

BUYER: ..... PRICE \$ .....

## CONTACTS

#### BONNYDALE QLD BLACK SIMMENTALS

Jake Berghofer and Emma Patterson,  
"Barambah Dale" Moffatdale QLD 4605  
PHONE 0418 649 666  
EMAIL qld@bonnydalesimmentals.com

#### DARAABAH FLECKVIEH • SIMMENTAL

Bruce and Melinda McColl,  
7R Jones Creek Road, Dubbo NSW 2830  
PHONE 0429 750 590  
EMAIL bruce@daraabah.com.au

#### GRANGEBURN SIMMENTALS

Brodhi Carracher,  
Glenelg Highway, Wannon VIC 3301  
PHONE 0418 723 996  
EMAIL brodhicarracher@hotmail.com

#### JARRVALE SIMMENTALS

Allan Jarrett,  
45 Greenpigeon Road, Horseshoe Creek,  
Kyogle, NSW 2474  
PHONE 0427 331 204  
EMAIL jarravalepastoral@bigpond.com

#### LONE STATION SIMMENTALS

Steven Manwill  
1154 Kipper Creek Road, Biarra, QLD 4313  
PHONE 0416 229 171  
EMAIL smanwill@pharosinvestments.com.au

#### MT MOONEY SIMMENTALS

Quentin and Renee Mooney  
Tintinara, SA, 5266  
PHONE 0438 011 800  
EMAIL renee@mtmooney.com.au

#### NANGUR SIMMENTALS

Don and Gail Louis  
5781 Burnett Highway, Goomeri, QLD 4601  
PHONE 0429 192 610  
EMAIL dgandgdouls@bigpond.com

#### SPRINGSIDE SIMMENTALS

Peter and Toni  
357 Irongate Rd, Springside QLD 4356  
PHONE 0427 800 522  
EMAIL springside@skymesh.com.au

#### THE WILGAS SIMMENTALS

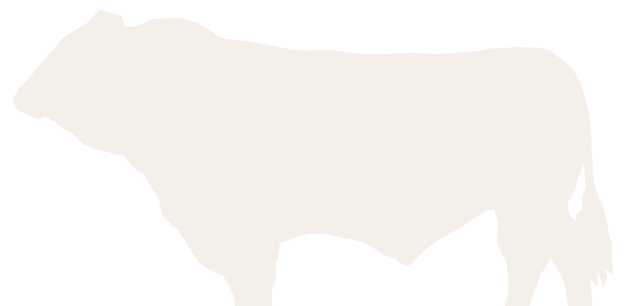
Courtney and Joel  
160 Lees Rd, Duri NSW 2344  
PHONE 0476 639 925  
EMAIL thewilgassimmentals@outlook.com

#### TULLAYR SIMMENTALS

George Wragge  
PO Box 281, Scone NSW 2337  
PHONE 0410 014 754  
EMAIL tullayr@gmail.com

#### YERWAL ESTATE SIMMENTAL & ANGUS STUD

Regan Burrow  
Lawreys Road, Naracoorte SA 5271  
PHONE 0419 817 669  
EMAIL regan@yerwalestate.com



## **EVERYTHING YOU NEED TO HELP PROMOTE, GROW AND MAINTAIN YOUR CATTLE STUD BRAND**

### **MARKETING**

Strategy, Plans and  
Campaigns

### **RURAL JOURNALISM**

Articles for print  
and digital media

### **SOCIAL**

Media Marketing For Digital  
and Facebook Campaigns

### **DIGITAL**

Digital, Print and Graphic  
Design

### **Elevate your cattle stud brand.**

Find out how effective marketing can  
improve the profitability of your stud  
breeding operation. Maximise your Stud  
Stock Sales with our Services:

### **WEBSITE**

Design, Development,  
Hosting and Maintenance

### **LOGO**

Branding Identities and  
Styles

### **GOOGLE**

Google Ad Words and  
Analytical Reporting

### **LAUNCH**

And Promotion of Cattle  
Stud Sales

We have the expertise to help you with your stud  
stock sales, if you have any questions, we are happy  
to answer them via phone or email.





[QLDSIMMENTALBULLSALE.COM.AU](http://QLDSIMMENTALBULLSALE.COM.AU)